

Original Article

## Presence of virulence genes and pathogenicity islands in extraintestinal pathogenic *Escherichia coli* isolates from Brazil

Paula Signolfi Cyoia<sup>1</sup>, Gabriela Regina Rodrigues<sup>1</sup>, Erick Kenji Nishio<sup>1</sup>, Leonardo Pinto Medeiros<sup>1</sup>, Vanessa Lumi Koga<sup>1</sup>, Ana Paula Dier Pereira<sup>2</sup>, Eliana Carolina Vespero<sup>2</sup>, Sébastien Houle<sup>3</sup>, Charles M Dozois<sup>3</sup>, Gerson Nakazato<sup>1</sup>, Renata Katsuko Takayama Kobayashi<sup>1</sup>

<sup>1</sup> Department of Microbiology, Biological Sciences Center, Universidade Estadual de Londrina, Londrina, Paraná, Brazil

<sup>2</sup> Department of Pathology, Clinical Microbiology Laboratory, Clinical Analysis and Toxicological, University Hospital, Universidade Estadual de Londrina, Londrina, Paraná, Brazil

<sup>3</sup> Institut National de la Recherche Scientifique, Institut Armand-Frappier (INRS), Laval, Quebec, Canada

### Abstract

**Introduction:** Extraintestinal pathogenic *Escherichia coli* (ExPEC) is associated with various diseases such as urinary tract infections, neonatal meningitis and septicemia. There are many virulence factors (VF) encoded by genes in ExPEC, including *papC*, *papG*, *ecpA*, *iroN*, *fyuA*, *iutA*, *ompTp*, *tsh*, *hlyF*, *hlyA* and *iss*. These virulence genes may be present in pathogenicity islands (PAI) or plasmids.

**Methodology:** In this study, we analyzed the presence of VF encoding genes, PAI sequences and phylogenetic groups of 96 ExPEC strains isolated from the urine and blood of patients at the University Hospital of Londrina, and we compared them with 50 faecal commensal strains from healthy individuals.

**Results:** The VF *fyuA* (65.60%) was detected in pathogenic strains and commensal strains (46%). A comparison of the distribution of ExPEC and commensal strains in the phylogenetic groups showed that more ExPEC strains belonged to group B2 whereas more of the commensal isolates belonged to group A. The distribution of the seven PAI sequences between commensal strains and ExPEC strains showed that PAI IV<sub>536</sub> was common in both ExPEC and commensal isolates.

**Conclusions:** These results showed that the ExPEC strains that belonged to group B2 had more PAI sequences compared to those of the other groups, especially group B1, which had virulence genes but the lowest percentage of PAI sequences, which leads us to conclude that the virulence of ExPEC strains characterized as B2 is likely attributed to PAI encoded genes, whereas the virulence of ExPEC strains belonging to phylogenetic group B1 is likely due to plasmid encoded virulence genes.

**Key words:** ExPEC; commensal *Escherichia coli*; virulence factors; PAI sequences; phylogenetic groups..

*J Infect Dev Ctries* 2015; 9(10):1068-1075. doi:10.3855/jidc.6683

(Received 03 February 2015 – Accepted 23 March 2015)

Copyright © 2015 Cyoia *et al.* This is an open-access article distributed under the Creative Commons Attribution License, which permits unrestricted use, distribution, and reproduction in any medium, provided the original work is properly cited.

### Introduction

Among *Escherichia coli* pathotypes, extraintestinal pathogenic *E. coli* (ExPEC) are important etiological agents of bacteremia and other systemic infections. ExPEC are often classified in different groups according to the anatomical site of infection, with uropathogenic *E. coli* (UPEC) being associated with urinary tract infections (UTIs) [1]. UTIs are one of the most common infections in the general population globally [2], and *E. coli* are the most commonly isolated etiological agent of UTIs, accounting for approximately 70%-85% of urinary infections.

There are many virulence genes associated with ExPEC, including *papC* (P fimbrial usher), *papG* (P fimbrial adhesin), *ecpA* (extracellular adhesive

fimbriae), *iroN* (salmochelinsiderophore receptor), *fyuA* (yersiniabactinsiderophore receptor), *iutA* (aerobactinsiderophore receptor), *ompTp* (episomal outer membrane protein OmpT), *tsh* (temperature sensitive hemagglutinin), *hlyF* (hemolysin F), *hlyA* (hemolysin) and *iss* (serum resistance associated protein) [3-5]. These factors are commonly found in ExPEC isolated from UTIs and are less common in most fecal commensal *E. coli* [6]. However, as UPEC originate from the intestinal tract, some fecal commensal strains may also contain these virulence genes.

In addition to the aforementioned virulence genes, genomic islands (GI), which include pathogenicity islands (PAIs), have been identified in ExPEC that

carry blocks of genes encoding several virulence factors. These, may have been acquired by plasmids and bacteriophages and can encode the molecular arsenal that enables these strains to colonize the urinary tract and survive in extraintestinal sites. In UPEC, the most studied PAIs are: PAI I and II identified in *E. coli* J96 and CFT073, and PAI I and IV in *E. coli*, with PAI IV<sub>536</sub> being more common in UPEC [6, 7]. The presence of PAIs in UPEC is a feature associated with clinically severe forms of infection [8].

Furthermore, *E. coli* can be classified phylogenetically into four main groups: A, B1, B2, and D [9-11]. Commensal isolates belong mainly to phylogenetic groups A and B1 [12]; intestinal pathogens are spread among groups B1, D, and less frequently belong to group A [5]; whereas human ExPEC are mostly members of group B2 and, to a lesser extent, group D [13].

The goal of this study was to investigate the presence of genes encoding virulence factors and pathogenicity island associated sequences, and to compare the phylogenetic groups of ExPEC isolated from humans to the phylogenetic groups of faecal commensal isolates in southern Brazil.

## Methodology

### *Isolation and identification of E. coli strains*

In this study, we studied 96 ExPEC isolates (90 from the urine of patients with a UTI; 6 from blood of

patients with bacteremia) collected between 2008-2012. As a comparative control, 50 *E. coli* isolates were also collected from faecal samples of healthy volunteers. The participants in this study, were all 18 years of age or older, and were seen by the outpatient service and emergency department of the University Hospital (UH) and Clinic Hospital (CH), Universidade Estadual de Londrina (UEL/PR). This study was approved by the Human Research Ethics Committee - UEL (Process 23335/08). *E. coli* strains were isolated and identified by the Phoenix automated method, and samples were stored in Brain Heart Infusion (BHI) (Difco, Livonia, USA) plus 20% glycerol (Sigma Aldrich, St. Louis, USA) media at -80 °C. ExPEC strains RS218, V27 [14], J96 [6] and EPEC 2348/69 [15] were used as reference strain controls.

### *Antimicrobial susceptibility testing*

ExPEC and commensal strains were tested for susceptibility against a large panel of antimicrobials by referencing the guidelines set forth by the Clinical and Laboratory Standards Institute [CLSI] (2012) [16]. Susceptibility to the following antimicrobials was determined by microdilution on the automated Phoenix system: amikacin, aztreonam, cefazolin, cefepime, cefotaxime, ceftazidime, ciprofloxacin, ertapenem, gentamicin, imipenem, levofloxacin, meropenem, nitrofurantoin, piperacillin + tazobactam, and trimethoprim-sulfamethoxazole.

**Table 1.** Primers for detection of virulence genes.

| Genes       | Sequences (5' to 3')   | Size of product (bp) |
|-------------|--|----------------------|
| <i>iroN</i> | AATCCGGCAAAGAGACGAACCGCCT<br>GTTCGGGCAACCCCTGCTTTGACTTT      | 553                  |
| <i>ompT</i> | TCATCCCGGAAGCCTCCCTCACTACTAT<br>TAGCGTTTGCTGCACTGGCTTCTGATAC | 496                  |
| <i>hlyF</i> | GGCCACAGTCGTTTAGGGTGCTTACC<br>GGCGGTTTAGGCATTCCGATACTCAG     | 450                  |
| <i>iss</i>  | CAGCAACCCGAACCACTTGATG<br>AGCATTGCCAGAGCGGCAGAA              | 323                  |
| <i>iutA</i> | GGCTGGACATCATGGGAAGTGG<br>CGTCGGGAACGGGTAGAATCG              | 302                  |
| <i>tsh</i>  | GGTGGTGCCTGGAGTGG<br>AGTCCAGCGTGATAGTGG                      | 620                  |
| <i>ecpA</i> | TGAAAAAAAAAGGTTCTGGCAATAGC<br>CGCTGATGAGGAGAAAAGTGAA         | 482                  |
| <i>hlyA</i> | AACAAGGATAAGCACTGTTCTGGC<br>ACCATATAAGCGGTCATTCCCCTG         | 1177                 |
| <i>fyuA</i> | TGATTAACCCCGCGACGGAA<br>CGCAGTAGGCACGATGTTGTA                | 880                  |
| <i>papC</i> | GACGGCTGTACTGCAGGGTGTGGCG<br>ATATCCTTTCTGCAGGGATGCAATA       | 328                  |
| <i>papG</i> | CTGTAATTACGGAAGTGATTTCTG<br>ACTATCCGGCTCCGGATAAACCAT         | 1070                 |

### Detecting virulence genes using PCR

Primers used for amplification of DNA fragments corresponding to virulence genes *iroN*, *ompTp*, *hlyF*, *iss*, *iutA* [4], *tsh* [17], *hlyA*, *fyuA*, *papG* [14], *papC* [18] and *ecpA* [19] are shown in Table 1. Bacterial DNA was amplified using 2.5 µl of supernatant in 12.5 µl of reaction mixture, which contained 1.5 U *Taq* polymerase (Invitrogen, Carlsbad, USA), 0.2 mM of each deoxynucleotide triphosphate (dNTP, Invitrogen), 2.5 mM MgCl<sub>2</sub>, PCR Buffer 10X (Invitrogen) and the appropriate primers (20 pmol/ µl).

Ten microliters of each reaction mixture were subjected to electrophoresis on a 2% agarose gel followed by staining with 1 µl Gel Red 20X (Biotium, Hayward, USA) (1:500) and visualization on a UV transilluminator. A 1 Kb DNA ladder (Invitrogen) was run on each gel.

### Detecting PAI sequences

Specific sequences corresponding to seven different pathogenicity islands were analyzed by PCR: PAI I<sub>536</sub>, PAI II<sub>536</sub>, PAI III<sub>536</sub>, PAI IV<sub>536</sub>, PAI I<sub>196</sub>, PAI I<sub>CFT073</sub> and PAI II<sub>CFT073</sub>. The isolates were subjected to PCR in a thermal cycler (Applied Biosystems, Carlsbad, USA) with an annealing temperature of 55°C as described by Sabaté *et al.* [6].

### Phylogenetic classification

The phylogenetic classification into groups was carried out according to the method developed by Clermont *et al.* [9] and modified by Kotlowski *et al.* [10]. The samples were subjected to PCR in a thermal cycler (Applied Biosystems) with an annealing temperature of 54°C. Ten microliters of each reaction mixture were subjected to electrophoresis on a 2% agarose gel followed by staining with 1 µl Gel Red (Biotium) and visualization in a UV transilluminator. A 1 Kb DNA ladder (Invitrogen) was run on each gel.

### Southern blot and DNA probe tests

Native plasmids from 10 isolates were extracted and analyzed as described by Kado and Liu [20]. We selected only the strains that had the genes *ompTp* and *hlyF* to check if they had the native plasmid and then tested for other genes present in what has been

described as the conserved virulence plasmidic (CVP) region (having 8 genes or operons: *iro*, *iuc*, *sit*, *ompTp*, *cva*, *hlyF*, *ets* and *iss*) [21] to confirm the presence of the native plasmid. Plasmidic DNA was separated by agarose gel electrophoresis and transferred to nylon membranes, Hybond-N+membrane (Amersham, GE Healthcare Life Sciences, Cleveland, USA) by capillary blotting. The probes for Southern hybridization were synthesized by PCR using specific primers for detection of virulence genes *ompTp*, *hlyF*, *sitA*, and APEC strain  $\chi$ 7122 [22] was used as positive a control. The amplified product was labeled with DIG-High Prime DNA Labeling and Detection Starter Kit II (Roche) according to the manufacturer's instructions. The blot was hybridized, blocked, incubated with anti-digoxigenin antibodies and developed by chemiluminescence according to the manufacturer's recommendations.

### Statistical analysis

Comparison of frequencies among different groups was analyzed by the Fisher exact test. The threshold for statistical significance was a P value < 0.05. The test was performed with the statistical program BioEstat version 5.3.

## Results

### Analysis of the distribution of extraintestinal infections

Among the 96 patients infected with ExPEC, 90 (93.8%) were from urinary tract infections that were categorized as cystitis (91.1%), urosepsis (6.7%) and pyelonephritis (2.2%) (Table 2). Using the records of patients, we were able to identify that 20% of the cases were recurrent infections. Six patients had bacteremia with positive blood cultures. Furthermore, UTIs were more frequent in female patients (71.9%). We noticed that the age of the patients with UTIs was most commonly between 18 and 30 years of age (30.4% of cases), while male patients were more often found in the >54 years age group, representing 57.1% of cases.

### Antimicrobial susceptibility testing

In the analysis of antimicrobial susceptibility testing performed on ExPEC isolates, we observed that among the 96 tested, 42 (43.75%) were resistant to at

**Table 2.** Gender distributed among *E. coli* uropathogenic infections.

|              | Cystitis          | Pyelonephritis  | Urosepsis       |
|--------------|-------------------|-----------------|-----------------|
| Female       | 63* <sup>†</sup>  | 2               | 4               |
| Male         | 19*               | 0               | 2               |
| <b>Total</b> | <b>82 (91.1%)</b> | <b>2 (2.2%)</b> | <b>6 (6.7%)</b> |

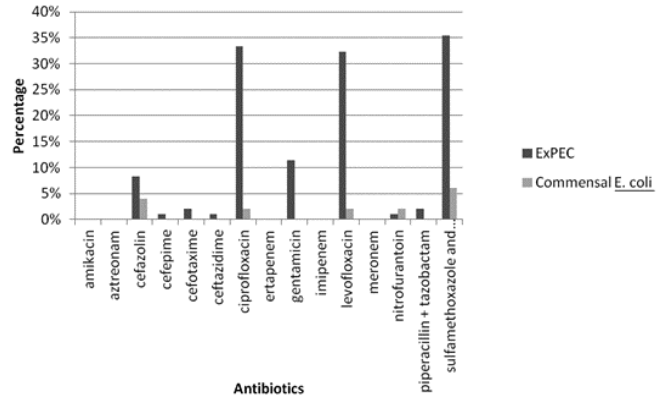
Data are reported as a number; \*  $p < 0.05$  Comparison within the same gender; <sup>†</sup>  $p < 0.05$  Comparison between genders.

least one antimicrobial. In addition, 27 (28%) of the ExPEC isolates showed resistance to three or more of the 15 antimicrobials tested. Antimicrobials for which ExPEC were found to be commonly resistant included sulfamethoxazole-trimethoprim (35.41%), ciprofloxacin (33.33%), levofloxacin (32.29%) and cefazolin (8.33 %) (Figure 1). Of the 50 faecal *E. coli* isolates used as a case control, only 6 (12%) were resistant to one or more antibiotics. As such, the ExPEC strains were significantly more resistant to antimicrobials ( $p < 0.01$ ) than the faecal control strains.

*Analysis of presence of virulence genes among E. coli strains*

Among the genes tested for by PCR, *ecpA* (94.8 %) and *fyuA* (65.6 %) were the most commonly identified, and both were more prevalent in strains belonging to phylogenetic groups B2 and D. As shown in Table 3, however, the *ecpA* gene was also more common in faecal isolates (96%). For the *iroN* and *iutA* genes, 35%-50% of strains were positive, and these genes were present among all phylogenetic groups. The *iroN* gene is more frequent in group B2, and *iutA* was prevalent in all groups except group A. The genes *ompTp*, *tsh*, *hlyF* and *hlyA* were less prevalent (10%-20%) and were distributed among all phylogenetic groups, though *hlyA* was not prevalent in group B2. The *iss* gene, was present in 20% of ExPEC strains and was more distributed in group B1, which is statistically significant when compared to group A. Finally, *papC*, and *papG* were detected in 20-22% of ExPEC strains, which was not significant when compared to faecal strains ( $p > 0.05$ ), and they were more common in strains from groups B2 and D. These results are shown in Table 3. In faecal commensal *E.coli* strains, the majority of these genes were less

**Figure 1.** Profile of resistance to 15 antimicrobial for 96 ExPEC strains and 50 faecal commensal isolates collected from patients at UH and UEL-HC in the period of 2008-2012.



common, with the exception of *ecpA*, or were not found, as is the case for the *iutA* gene ( $p < 0.01$ ). Therefore, in commensal strains, group A was prevalent especially for the *fyuA*, *hlyA* and *ecpA* genes. When compared to ExPEC strains, most genes were present in 0-15% of the commensal faecal isolates.

Out of the 96 ExPEC strains, 18 (18.75%) belonged to group A, 19 (19.79%) belonged to group B1, 33 (34.38%) were from group B2 and 26 (27.08%) were classified as group D.

*Analysis of the distribution of PAI sequences in ExPEC and commensal strains*

Of the 96 ExPEC strains analyzed in this report, 75 (78%) were positive for PAI sequences and 26 (52%) of 50 faecal *E. coli* isolates contained PAI sequences. A comparison of the distribution of PAI sequences in faecal commensal strains and ExPEC strains are shown in Figure 2. PAI III<sub>536</sub> sequences were present in only one strain (1.04%), whereas PAI I<sub>96</sub> was not

**Table 3.** Distribution of virulence associated genes between phylogroups within ExPEC strains and faecal commensal strains.

| Genes        | Phylogenetic groups in ExPEC |           |            |           |            | Phylogenetic groups in Commensal |          |         |             |           |
|--------------|------------------------------|-----------|------------|-----------|------------|----------------------------------|----------|---------|-------------|-----------|
|              | B2                           | B1        | D          | A         | Total      | B2                               | B1       | D       | A           | Total     |
| <i>iroN</i>  | 48.5*(16)                    | 24.3 (8)  | 15.2 (5)   | 12.1 (4)  | 34.4* (33) | 040.0 (2)                        | 0.0 (0)  | 0.0 (0) | 060.0 (3)   | 10.0 (5)  |
| <i>hlyF</i>  | 26.3 (5)                     | 42.1 (8)  | 16.0 (3)   | 16.0 (3)  | 19.8* (19) | 066.7 (2)                        | 0.0 (0)  | 0.0 (0) | 033.3 (1)   | 6.0 (3)   |
| <i>iutA</i>  | 30.0 (12)                    | 17.5 (7)  | 37.5 (15)  | 15.0 (6)  | 41.7* (40) | 00.0 (0)                         | 0.0 (0)  | 0.0 (0) | 00.0 (0)    | 0.0 (0)   |
| <i>ompTp</i> | 27.3 (6)                     | 36.5 (8)  | 22.7 (5)   | 13.6 (3)  | 22.9*(22)  | 100.0 (2)                        | 0.0 (0)  | 0.0 (0) | 00.0 (0)    | 4.0 (2)   |
| <i>iss</i>   | 30.0 (6)                     | 40.0 (8)  | 20.0 (4)   | 10.0 (2)  | 20.8 (20)  | 025.0 (1)                        | 0.0 (0)  | 0.0 (0) | 075.0 (3)   | 8.0 (4)   |
| <i>fyuA</i>  | 47.6*(30)                    | 6.3 (4)   | 34.9* (22) | 11.1 (7)  | 65.6*(63)  | 08.7 (2)                         | 0.0 (0)  | 0.0 (0) | 091.3* (21) | 46.0 (23) |
| <i>tsh</i>   | 33.3 (3)                     | 22.2 (2)  | 33.3 (3)   | 11.1 (1)  | 9.4 (9)    | 00.0 (0)                         | 0.0 (0)  | 0.0 (0) | 100.0 (1)   | 2.0 (1)   |
| <i>hlyA</i>  | 66.7*(12)                    | 22.2 (4)  | 5.6 (1)    | 5.6 (1)   | 18.8* (18) | 00.0 (0)                         | 0.0 (0)  | 0.0 (0) | 100.0* (4)  | 8.0 (4)   |
| <i>papC</i>  | 36.4*(8)                     | 9.1 (2)   | 40.9* (9)  | 13.6 (3)  | 22.9 (22)  | 033.3 (2)                        | 0.0 (0)  | 0.0 (0) | 066.7 (4)   | 12.0 (6)  |
| <i>papG</i>  | 50.0*(10)                    | 5.0 (1)   | 35.0* (7)  | 10.0 (2)  | 20.8 (20)  | 033.0 (2)                        | 0.0 (0)  | 0.0 (0) | 067.0 (4)   | 12.0 (6)  |
| <i>ecpA</i>  | 36.3 (33)                    | 17.6 (16) | 28.6 (26)  | 17.6 (16) | 94.8 (91)  | 010.4 (5)                        | 10.4 (5) | 6.3 (3) | 072.9* (35) | 96.0 (48) |

Data are reported as percent with number in parentheses; \* $p < 0.05$ , frequency of genes in each phylogenetic group compared to the frequency in all others (Fisher exact test).

detected in any of the isolates. The distribution of PAIs in ExPEC and faecal commensal isolates is presented in Figure 2.

The distribution of PAI sequences in ExPEC and commensal strains by phylogenetic group shows that most ExPEC strains contain PAI sequences (78%) and belong to group B2 (42.7%). In commensal strains that have PAI sequences (52%) most of them belong to group A (84.6%). Of the 96 ExPEC isolates, three or more PAI sequences were found in 30 ExPEC strains (31.25%). Strains that are considered to be most virulent, generally belonging to group B2, had three or more PAI sequences (86.7%), whereas strains that did not have PAI sequences, were more commonly distributed in group B1 (47.6%) (Table 4).

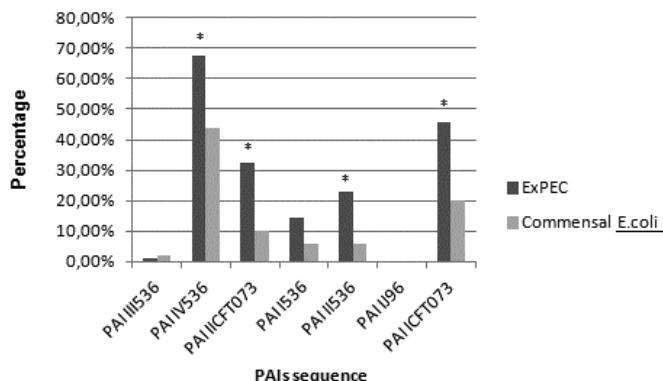
*Southern blot and DNA probe tests*

All 10 samples tested presented (1 to 5) plasmids of high molecular weight, and all the samples that had *hlyF* and *ompT* genes were present in the higher molecular weight plasmids, as demonstrated by Southern blot using specific DNA probes labeled with digoxigenin. Of the 10 samples tested, fifty percent belonged to the B1 group and fifty percent harbored seven of eight genes presented in the CVP region (Table 5).

**Discussion**

There is a major concern regarding acquisition of resistance to several drugs used in the treatment of infections caused by *E. coli* causing UTIs [23].

**Figure 2.** Analysis of Pathogenicity Island associated sequences in 96 ExPEC and 50 commensal *E. coli* strains collected at UH and UEL-HC in the period of 2008-2012. \*P < 0.01.



Antimicrobials that are widely prescribed for treatment of UTI episodes include beta-lactams, trimethoprim-sulfamethoxazole, quinolones, fluoroquinolones and aminoglycosides [24]. In Southern Brazil we have little recent data concerning the antimicrobial resistance of ExPEC. We had higher resistance profiles in ExPEC compared to commensal isolates, particularly with respect to resistance to fluoroquinolones (ciprofloxacin and levofloxacin) and trimethoprim-sulfamethoxazole (both at approximately 1/3 of strains being resistant) compared to other studies [24] (Figure 1). Among the ExPEC strains we tested, 28% were resistant to three or more antimicrobials. It is necessary to perform antimicrobial susceptibility testing because the *E. coli* strains show

**Table 4.** Proportion of isolates with zero, one, two or three or more PAI sequences in ExPEC strains.

| PAIs      | Phylogenetic groups in ExPEC |       |       |       |
|-----------|------------------------------|-------|-------|-------|
|           | B2                           | B1    | D     | A     |
| 3 or more | 86.7%                        | 00.0% | 06.7% | 06.7% |
| 1 or 2    | 13.3%                        | 20.0% | 46.7% | 20.0% |
| Zero      | 04.8%                        | 47.6% | 14.3% | 33.3% |

**Table 5.** Bacterial and molecular characteristics of 10 studied isolates of ExPEC.

| Strains  | UTI            | Phylogenetic group | Virulence Genes |             |             |             |             |             |             |            |
|----------|----------------|--------------------|-----------------|-------------|-------------|-------------|-------------|-------------|-------------|------------|
|          |                |                    | <i>hlyF</i>     | <i>sitA</i> | <i>ompT</i> | <i>cvaA</i> | <i>etsC</i> | <i>iucC</i> | <i>iroN</i> | <i>iss</i> |
| UPEC 16  | Cystitis       | B2                 | +               | +           | +           | -           | +           | +           | +           | +          |
| UPEC 31  | Cystitis       | B1                 | +               | +           | +           | -           | +           | +           | +           | +          |
| UPEC 33  | Cystitis       | B1                 | +               | +           | +           | -           | -           | -           | +           | +          |
| UPEC 40  | Pyelonephritis | B2                 | +               | +           | +           | -           | +           | +           | +           | +          |
| UPEC 42  | Cystitis       | A                  | +               | +           | +           | -           | -           | -           | -           | -          |
| UPEC 59  | Cystitis       | B1                 | +               | +           | +           | -           | +           | -           | +           | +          |
| UPEC 95  | Cystitis       | B1                 | +               | +           | +           | -           | -           | -           | +           | +          |
| UPEC 97  | Cystitis       | B1                 | +               | +           | +           | +           | +           | +           | +           | +          |
| HEMO 81  | Hemoculture    | D                  | +               | +           | +           | -           | +           | +           | +           | +          |
| HEMO 114 | Hemoculture    | A                  | +               | +           | +           | -           | -           | -           | +           | +          |

variability in their susceptibility to antimicrobials and because upwards of 43.75% of *E. coli* are resistant to first-line antimicrobials.

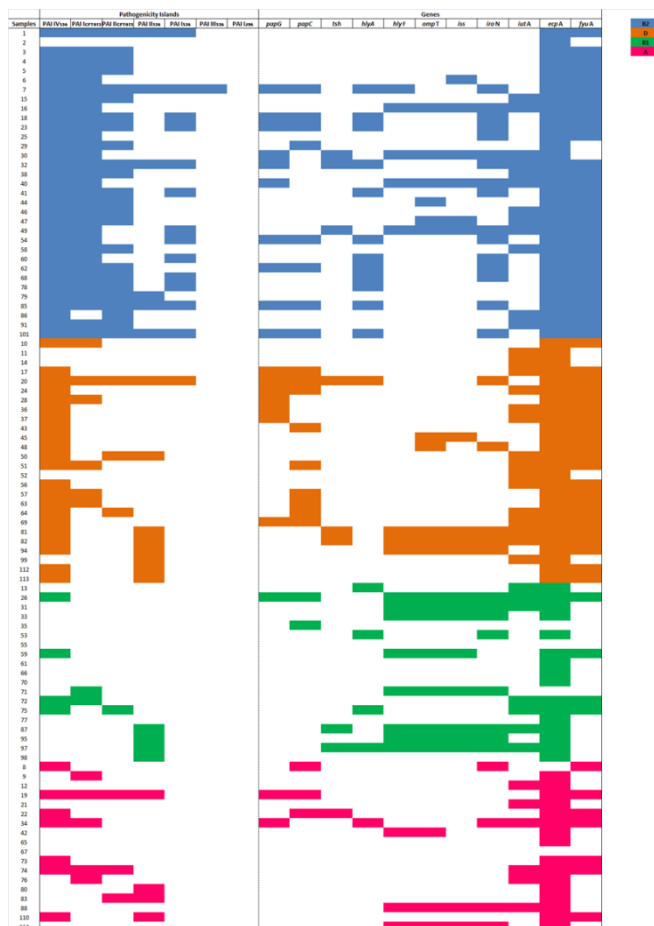
ExPEC are known to produce several virulence factors, contributing to their survival in the host urinary tract, blood, and other tissues. Among the eleven tested virulence genes, all of them were detected in some of the ExPEC strains and faecal commensal isolates, as shown by others [4,25]. The gene most commonly found in both ExPEC and commensal samples was *ecpA* (94.8% and 96%, respectively). Despite potentially playing a role in UTI virulence [26], as *ecpA* is highly conserved between both ExPEC and faecal commensal strains, it cannot serve as a marker to potentially differentiate ExPEC from commensal *E. coli*. However, in commensal strains, group A was prevalent especially for genes *fyuA*, *hlyA* and *ecpA*. In strains belonging to group B2

a greater presence of all tested genes was expected because this group is characterized as being the most virulent [13]. In our study, the percentage of ExPEC belonging to group B2 was 34.4%. By contrast, although ExPEC group B2 predominated, ExPEC group B1 was also common (19.8%) in our study.

The comparison of the presence of these virulence genes in commensal faecal *E. coli* isolates and ExPEC showed that some genes are significantly more present in ExPEC (Table 3). Genes such as *iroN*, *iutA*, *ompTp* and *hlyF* present in the CVP region [21] were significantly more frequent in clinical isolates compared to commensal faecal isolates. In this study, fifty percent of the ExPEC strains containing plasmid-encoded virulence-associated genes such as *ompTp* and *hlyF* belonged to phylogenetic group B1 (Table 5).

The PAI sequences were also present in some commensal faecal isolates although less often (52%) than in ExPEC strains (78%). The distribution of PAI sequences in ExPEC samples in this study also corroborates the results published by Sabaté *et al.* [6]. PAI IV<sub>536</sub>, reported as the most common in UPEC, was found most frequently in our strains (Figure 2). This PAI is quite stable in *E. coli* 536 (originally isolated from a patient with acute pyelonephritis) which could explain its high frequency in our strains as well. The PAI III<sub>536</sub>, which is classified as unstable, easily lost and not required for virulence [6], was present in a low percentage of ExPEC (1.04%). The majority of strains that had PAI sequences belonged mainly to phylogenetic group B2, and the strains that belonged to group B1 had few PAI sequences, which leads us to conclude that the virulence of ExPEC strains characterized as B2 is likely attributed to PAI encoded genes, whereas the virulence of ExPEC strains belonging to phylogenetic group B1 is likely due to plasmid encoded virulence genes (Figure 3).

**Figure 3.** Study of pathogenicity islands, phylogenetic classification, and virulence genes in 96 ExPEC strains from human. In blue are the samples belonging to phylogenetic group B2; in orange, the samples belonging to group D; in green, the group B1; and finally in pink, samples related to group A.



**Conclusion**

In summary, we have found virulence genes in our ExPEC and commensal samples, but some genes (*iroN*, *iutA*, *ompTp* and *hlyF*) are significantly more enriched in ExPEC strains. We also observed that PAI sequences and the B2 phylogroup were highly prevalent among ExPEC strains. Our results suggest that continued research on virulence factors of ExPEC is necessary because there is no consensus regarding which genes would be ideal virulence markers, as all of these genes provide the bacteria more resistance against host defense mechanisms when compared to the commensal strains.

## Acknowledgements

This study was supported by Decit/SCTIE/MS/CNPq, Fundação Araucária (Edital PPSUS: Gestão Compartilhada em Saúde—2009). We thank the Fundação Araucária - Paraná State, the Coordination of Improvement of Higher Education Personnel (CAPES) and Science without Borders (CsF – CNPq), who enabled the execution of this study. And we also thank the University Hospital/ UEL for providing the samples for our research.

## References

- Toval F, Köhler CD, Vogel U, Wagenlehner F, Mellmann A, Fruth A, Schmidt MA, Karch H, Bielaszewska M, Dobrindt U (2014) Characterization of *Escherichia coli* isolates from hospital inpatients or outpatients with urinary tract infection. J Clin Microbiol 52: 407-418.
- Lopes HV, Tavares W, Infectologia SBd, Urologia SBd (2005) Diagnosis of urinary tract infections. Rev Assoc Med Bras 51: 306-308.
- Bélangier L, Garenaux A, Harel J, Boulianne M, Nadeau E, Dozois CM (2011) *Escherichia coli* from animal reservoirs as a potential source of human extraintestinal pathogenic *E. coli*. FEMS Immunol Med Microbiol 62: 1-10.
- Johnson TJ, Wannemuehler Y, Doetkott C, Johnson SJ, Rosenberger SC, Nolan LK (2008) Identification of minimal predictors of avian pathogenic *Escherichia coli* virulence for use as a rapid diagnostic tool. J Clin Microbiol 46: 3987-3996.
- Santos ACM, Zidko ACM, Pignatari ACC, Gales AC, Silva RM (2009) Virulência de *Escherichia coli* patogênica extra-intestinal (ExPEC) em relação à idade e ao sexo do hospedeiro. O Mundo da Saúde 33: 392-400.
- Sabaté M, Moreno E, Pérez T, Andreu A, Prats G (2006) Pathogenicity island markers in commensal and uropathogenic *Escherichia coli* isolates. Clin Microbiol Infect 12: 880-886.
- Hacker J, Bender L, Ott M, Wingender J, Lund B, Marre R, Goebel W (1990) Deletions of chromosomal regions coding for *fimbriae* and hemolysins occur *in vitro* and *in vivo* in various extraintestinal *Escherichia coli* isolates. Microb Pathog 8: 213-225.
- Gal-Mor O, Finlay BB (2006) Pathogenicity islands: a molecular toolbox for bacterial virulence. Cell Microbiol 8: 1707-1719.
- Clermont O, Bonacorsi S, Bingen E (2000) Rapid and simple determination of the *Escherichia coli* phylogenetic group. Appl Environ Microbiol 66: 4555-4558.
- Kotlowski R, Bernstein CN, Sepehri S, Krause DO (2007) High prevalence of *Escherichia coli* belonging to the B2+D phylogenetic group in inflammatory bowel disease. Gut 56: 669-675.
- Clermont O, Christenson JK, Denamur E, Gordon DM (2013) The Clermont *Escherichia coli* phylo-typing method revisited: improvement of specificity and detection of new phylo-groups. Environ Microbiol Rep 5: 58-65.
- Moreno E, Planells I, Prats G, Planes AM, Moreno G, Andreu A (2005) Comparative study of *Escherichia coli* virulence determinants in strains causing urinary tract bacteremia versus strains causing pyelonephritis and other sources of bacteremia. Diagn Microbiol Infect Dis 53: 93-99.
- Paiva AL, Lincopan N, Silva KC, Neves PR, Moreno AM, McCulloch JA, Astolfi-Ferreira CS, Ferreira AJ (2013) Low-virulence phylogenetic background of CTX-M-producing *Escherichia coli* isolated from extraintestinal infections. J Infect Dev Ctries 7: 756-760. doi:10.3855/jidc.3781.
- Johnson JR, Stell AL (2000) Extended virulence genotypes of *Escherichia coli* strains from patients with urosepsis in relation to phylogeny and host compromise. J Infect Dis 181: 261-272.
- Levine MM, Bergquist EJ, Nalin DR, Waterman DH, Hornick RB, Young CR, Sotman S (1978) *Escherichia coli* strains that cause diarrhoea but do not produce heat-labile or heat-stable enterotoxins and are non-invasive. Lancet 1: 1119-1122.
- CLSI (Clinical and Laboratory Standards Institute) (2012) Performance standards for antimicrobial disk susceptibility tests. Approved Standard, M02-A11. 11th edition. Wayne, PA, USA: CLSI.
- Dozois CM, Dho-Moulin M, Brée A, Fairbrother JM, Desautels C, Curtiss R (2000) Relationship between the Tsh autotransporter and pathogenicity of avian *Escherichia coli* and localization and analysis of the Tsh genetic region. Infect Immun 68: 4145-4154.
- Le Bouguenec C, Archambaud M, Labigne A (1992) Rapid and specific detection of the pap, afa, and sfa adhesin-encoding operons in uropathogenic *Escherichia coli* strains by polymerase chain reaction. J Clin Microbiol 30: 1189-1193.
- Blackburn D, Husband A, Saldaña Z, Nada RA, Klena J, Qadri F, Girón JA (2009) Distribution of the *Escherichia coli* common pilus among diverse strains of human enterotoxigenic *E. coli*. J Clin Microbiol 47: 1781-1784.
- Kado CI, Liu ST (1981) Rapid procedure for detection and isolation of large and small plasmids. J Bacteriol 145: 1365-1373.
- Lemaître C, Mahjoub-Messai F, Dupont D, Caro V, Diancourt L, Bingen E, Bidet P, Bonacorsi S (2013) A conserved virulence plasmidic region contributes to the virulence of the multiresistant *Escherichia coli* meningitis strain S286 belonging to phylogenetic group C. PLoS One 8:e74423.
- Dozois CM, Daigle F, Curtiss R (2003) Identification of pathogen-specific and conserved genes expressed *in vivo* by an avian pathogenic *Escherichia coli* strain. Proc Natl Acad Sci USA 100: 247-252.
- Foxman B (2002) Epidemiology of urinary tract infections: incidence, morbidity, and economic costs. Am J Med 113 Suppl 1A: 5S-13S.
- Teichmann A, Agra HN, Nunes LeS, da Rocha MP, Renner JD, Possuelo LG, Carneiro M, Rieger A, Benitez LB, Valim AR (2014) Antibiotic resistance and detection of the sul2 gene in urinary isolates of *Escherichia coli* in patients from Brazil. J Infect Dev Ctries 8: 39-43. doi:10.3855/jidc.3380.
- Zhao L, Gao S, Huan H, Xu X, Zhu X, Yang W, Gao Q, Liu X (2009) Comparison of virulence factors and expression of specific genes between uropathogenic *Escherichia coli* and avian pathogenic *E. coli* in a murine urinary tract infection model and a chicken challenge model. Microbiology 155: 1634-1644.
- Stacy AK, Mitchell NM, Maddux JT, De la Cruz MA, Durán L, Girón JA, Curtiss R, Mellata M (2014) Evaluation of the prevalence and production of *Escherichia coli* common pilus among avian pathogenic *E. coli* and its role in virulence. PLoS One 9: e86565.

**Corresponding author**

Professor Renata Katsuko Takayama Kobayashi, PhD

Phone: + 55 43 3371-4396

Fax: +55 43 3371-4788

Email address: kobayashirt@uel.br

**Conflict of interests:** No conflict of interests is declared.