

Coronavirus Pandemic

Clinical, Radiological Features and Outcome of COVID-19 patients in a Secondary Hospital in Jakarta, Indonesia

Muhammad Hafiz¹, Aziza Ghanie Icksan², Annisa Dian Harlivasari¹, Rizky Aulia³, Febrina Susanti¹,
 Lourisa Eldinia⁴

¹ Department of Pulmonology and Respiratory Medicine, Budhi Asih Hospital, Jakarta, Indonesia

² Department of Radiology, Faculty of Medicine University Pembangunan Nasional, Persahabatan Hospital, Jakarta, Indonesia

³ Department of Cardiology, Budhi Asih Hospital, Jakarta, Indonesia

⁴ Department of Emergency Medicine, Budhi Asih Hospital, Jakarta, Indonesia

Abstract

Introduction: The numbers of people infected with SARS-CoV-2 in Indonesia especially in Jakarta as the epicenter continue to rise. Limited published clinical data, scarcity and long turn over time of diagnostic testing put clinician in dilemma to make diagnosis.

Methodology: This is an observational case series study from confirmed COVID-19 patient in our hospital from first case admission on 17 March 30 April, 2020. We collected patient's demography, symptoms, comorbidities, therapy, laboratory, chest x-ray and ECG consecutively.

Results: Between 17 March 2020 and 30 April 2020, there were 30 confirmed COVID-19 cases, 16 (53.3%) were male. Clinical symptoms were dyspnea in 22 (73.3%) and dry cough 16 (53.3%). Comorbidities were diabetes in 14 (46.6%), hypertension 10 (33.3%) and Coronary Artery Disease (CAD) in 10 (33.3%) patients respectively. Laboratory findings showed lymphopenia in 21 (70%) patients, increased inflammation marker in Erythrocyte Sedimentation Rate (ESR), C-Reactive Protein (CRP) and Lactate Dehydrogenase (LDH) 21 (70%), 23 (76.6%) and 12 (40%) patients respectively. Twenty-seven (90%) cases had abnormal Chest X-Ray (CXR) and mostly severe 18 (60%). Descriptive finding for images included consolidation 16 (53.3%) and Ground Glass Opacities (GGO) in 10 (33.3%) patients.

Conclusions: Based on our findings, most cases of COVID-19 admitted in secondary referral hospital were already in moderate to severe stages. This is most likely due to late referral from primary care and unspecific clinical features resemblance of other infectious diseases. Inflammation marker and CXR are cost effective findings and can be used as marker to determine further referral.

Key words: Diagnosis; Covid-19; Limited resources.

J Infect Dev Ctries 2020; 14(7):750-757. doi:10.3855/jidc.12911

(Received 29 April 2020 – Accepted 08 July 2020)

Copyright © 2020 Hafiz *et al.* This is an open-access article distributed under the Creative Commons Attribution License, which permits unrestricted use, distribution, and reproduction in any medium, provided the original work is properly cited.

Introduction

A new emerging infectious disease which was first identified in Wuhan, China, in late December 2019 goes on to cause a global pandemic worldwide. This disease is caused by a single RNA stranded, novel beta corona virus which was very similar with SARS-CoV and MERS-CoV in terms of binding receptor and belong to the same genus. The International Committee on Taxonomy of Viruses (ICTV) named the virus as SARS-CoV-2 on 11 February 2020 and the disease was referred as COVID-19 by World Health Organization (WHO). The virus continues to threaten across the globe as more than 5,000,000 people were infected with more than 350,000 deaths [1, 2].

Previous data from several countries indicated that the symptoms of COVID-19 were fever, dry cough and fatigue. Other symptoms include myalgia, sore throat,

dyspepsia, diarrhea, dyspnea and vomiting [3]. The clinical spectrum of COVID-19 can be ranging from asymptomatic, mild, moderate to severe disease that lead to severe respiratory distress. Indonesia is one of many countries impacted by this SARS-CoV-2 infection, as the first case was reported on March 2, 2020, and increased exponentially since then. As of 24 May 2020 there were 22,271 confirmed cases. Data from Republic of Indonesia Ministry of Health as of May 24, 2020 there were 6,561 confirmed COVID-19 cases, with 505 deaths in Jakarta [corona.jakarta.go.id].[4] Our hospital, Budhi Asih, is one of secondary hospital located in East Jakarta, with a total capacity of 50 beds for COVID-19.

Currently, there are no data available regarding the clinical characteristic of COVID-19 patient admitted in secondary hospital. This situation has put clinician in

a dilemma on how to recognize, diagnose and when to treat the patients. The current diagnostic process for COVID-19 have some limitations, especially on the limited resources for Reverse Transcriptase-Polymerase Chain Reaction (RT-PCR) of SARS-CoV-2. Previously in Jakarta, there was only one central laboratory appointed to handle RT-PCR examination, thus turn over time can be overwhelmed.

Methodology

Study design and participants

This is a single center observational case series study. Data were collected consecutively during admission. The enrollment included from the first patient admitted to Emergency Department (ED) on 17

March 2020 until 30 April 2020. All 30 cases enrolled in this study were confirmed COVID-19 from RT-PCR detection of SARS-CoV-2 using nasopharyngeal swab in line with guideline according to the diagnostic criteria by the Indonesian Ministry of Health. This study has been approved by Budhi Asih Hospital ethics committee (No.47/KEP-ETIK/IV/2020).

Data Collection

Clinical characteristic, comorbidities, symptoms, laboratory, chest imaging as well as ECG changes were obtained consecutively during patients visit to the Emergency Department (ED). Treatments during hospitalization, referral, discharges and deaths were also recorded. All CXR were interpreted by local radiologist and have been reviewed by an external radiologist having 12 years experiences as a thoracic radiologist. To quantify the extent of infection, a severity score was calculated by adapting and simplifying the Radiographic Assessment of Lung Edema (RALE) score proposed by Warren et al and British Society of Thoracic Imaging (BSTI). Mild disease means 0-25 % lung abnormality, moderate means > 25 – 50% and severe > 50% respectively [5, 6].

Statistical analysis

Variables were reported as frequency, percentages (%), mean (SD) if they are normally distributed and median with range (min-max) for abnormal distribution. Laboratory results are mentioned as actual data and assessed whether or not the measurements fell within normal ranges. Comparisons of percentages between groups displayed with Fischer's exact test. All data analysis were carried out using IBM SPSS statistics (Version 23).

Results

Patient characteristics

Thirty confirmed COVID-19 patients were enrolled with mean age 53.9 ± 16.4 years (Table 1), 16 (53.3%) were male and 14 (46.6%) were female. Six patients (20%) had a history of contact exposure from various known cluster sites including family and religious gathering. Smoking history was found in 14 (46.6%) patients. Smoking history are considered important data, due to evidence that suggest smoking increase susceptibility to SARS-CoV-2 infection and may progress to severe disease due to increase of ACE2 receptors and underlying lung diseases [4]. Symptoms presented upon admission were dry cough 16 (53.3%) and shortness of breath 22 (73.3%) patients. Other

Table 1. Clinical characteristics of patients with COVID-19.

Clinical characteristics	n =30 (%), mean \pm SD, median (min-max)
Age (year)	53.9 \pm 16,4
Gender	
Male	16 (53.3)
Female	14 (46.6)
Contact exposure	6 (20)
Smoker/former smoker	14 (46.6)
Symptoms	
Cough	16 (53.3)
Shortness of breath	22 (73.3)
Fever	10 (33.3)
Fatigue	10 (33.3)
Vomitting	5 (16.6)
Anosmia	2 (6.6)
Comorbid	
Diabetes Melitus	14 (46.6)
Hypertension	10 (33.3)
Coronary arterial disease	10 (33.3)
Therapy	
Antiviral:	
Oseltamivir	23 (76.6)
Antibiotics	
Levofloxacin	6 (20)
Azithromycin	23 (76.6)
Others	
Chloroquine	22 (73.3)
Oxygen therapy	
Low flow oxygen therapy	19 (63.3)
Venturi mask	11 (36.6)
Length of stay (days)	4 (1-12)
Outcome	
Discharge	12 (40)
Referred	11 (36.6)
Death	7 (23.3)
Cause of death	
Respiratory failure	5 (16.6)
Septic shock	1 (7.7)
Malignant arrhythmia	1 (3.8)

symptoms that patients reported are fever 10 (33.37%), fatigue 10 (33.37%), vomiting 5 (16.6%) and anosmia 2 (6.6%) patients respectively. Comorbidities of these patients were diabetes in 14 (46.6%), hypertension 10 (33.3%) and CAD 10 (33.3%) patients respectively.

Laboratory findings

Upon admission, 5 (16.7%) and 3 (10%) patients had a white blood cell count above and under normal range respectively, with mean value $7.5 + 3.8 \times 10^3/\mu\text{L}$. Twenty-patients (66.7%) and only 1 (3.3%) had neutrophils above and below normal range respectively. Twenty-one (70%) had lymphocytes count below normal range. Eosinophil count drop below normal range in 24 (80%) patients. Platelet counts below and above normal range were noted in 3 (10%) and 1 (3.3%) patients respectively. Neutrophil Lymphocyte Ratio (NLR) marker increased above normal in 19 (63.3%) patients. Hemoglobin level decreased in 9 (30%) patients. Inflammation marker such as Erythrocyte Sedimentation Rate (ESR), C-reactive protein (CRP) and Lactate Dehydrogenase (LDH) were also measured and all values are shown to be increase dramatically. 21 (70%), 23 (76.6%), 12 (40%) of ESR, CRP and LDH are above normal range respectively. Fourteen (46.6%) patients had elevated liver enzyme. Regarding blood gas analysis, we recorded Partial Pressure of Arterial Oxygen (PaO_2) divided by Fraction of Inspired Oxygen (FiO_2) and Oxygen Saturation (SaO_2) with 12 (40%) and 9 (30%) patients decrease below normal value respectively (Table 2).

Chest X-ray findings

All patients underwent CXR examination upon admission in our ED due to practicality and availability (Figure 1). Of the thirty CXR included in this report only 3 (10%) patients were mild, 9 (30%) was moderate while most of them 18 (60%) was classified as severe. Consolidation and GGO were the most common descriptive findings with 16 (53.3%) and 10 (33.3%) respectively. Location of the abnormality was peripheral 19 (63.3%) and bilateral in 22 (73.3%) patients respectively. Nodule, effusion and reticular opacity were found to be uncommon. Interestingly enough we found cardiomegaly in 10 (33.3%) which may be related to hypertension as comorbid (Table 3).

ECG findings

From 30 patients, only 18 patients underwent ECG on the time of admission. One patients (5.56%) presented with supraventricular tachycardia and 17 (94.4%) patients had sinus rhythm. Most cases had

tachycardia at admission with enlarged Left Atrial (LA) 9 (50%). Left and right ventricular hypertrophy was only found in 1 (5.56%) case each.

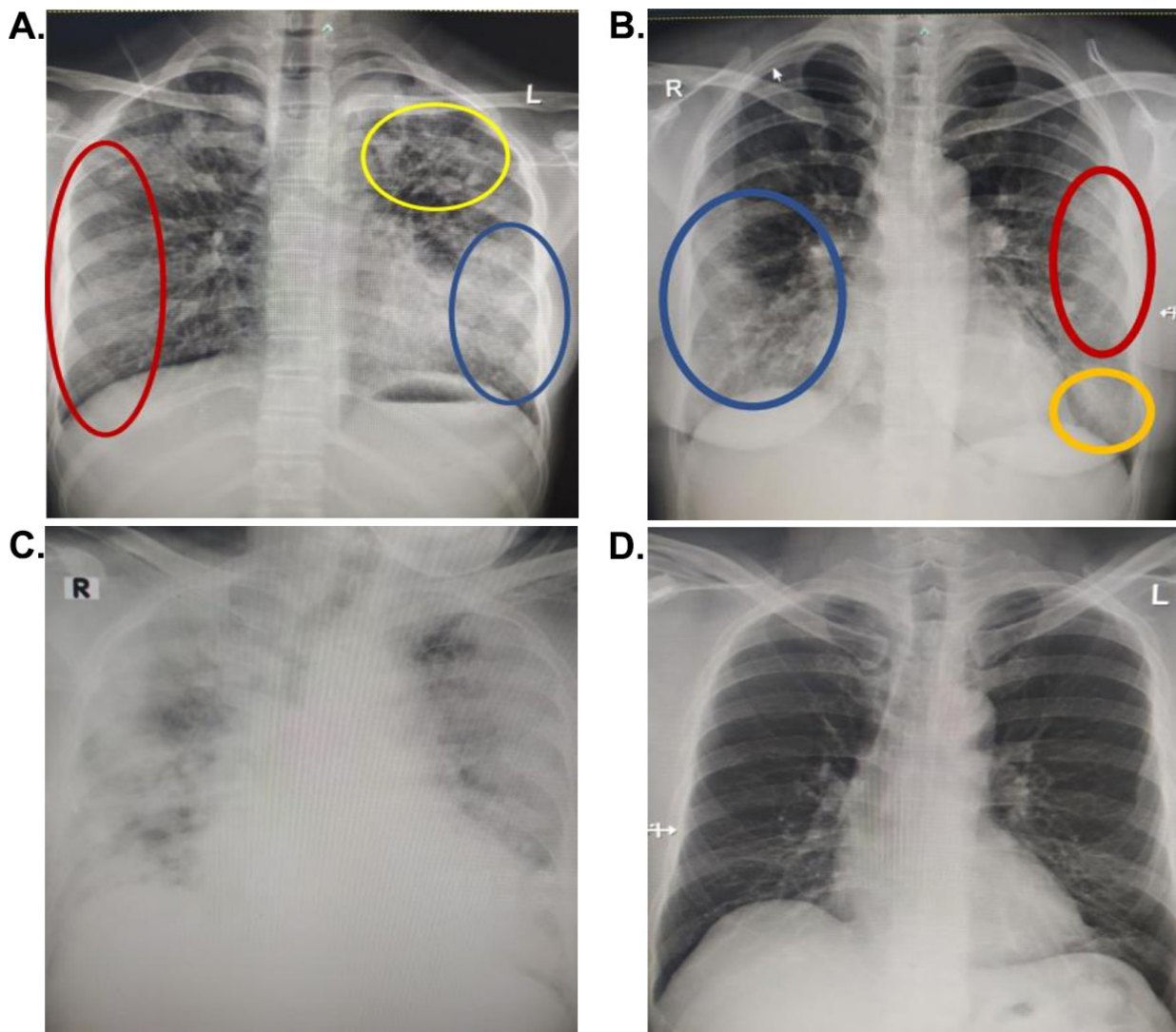
Table 2. Laboratory findings of COVID-19 patients on admission to hospital.

Clinical characteristics	N = 30 (%), mean \pm SD, median (min - max)
White blood cell count; $\times 10^3/\mu\text{L}$; normal range 3.8 - 10.6	7.5 \pm 3.8
Increase	5 (16.7)
Decrease	3 (10)
Neutrophil percentage; normal range 50 - 70	76.8 \pm 7.7
Increase	20 (76.9)
Decrease	1 (3.8)
Neutrophil/Lymphocyte Ratio (NLR)	6.4 (2.8-30)
Increase	19 (63.3)
Lymphocytes percentage; normal range 25-40	13 \pm 6.4
Increase	0 (0)
Decrease	21 (70)
Eosinophils percentage; normal range 2-4	0 (0-3)
Increase	0
Decrease	24 (80)
Basophils percentage; normal range 0-1	0 (0-1)
Increase	7 (23.3)
Decrease	19 (63.3)
Monocyte percentage; normal range 2-8	7 (3-21)
Increase	10 (33.3)
Decrease	0
Platelet count; $\times 10^3/\mu\text{L}$; normal range 150-440	215 \pm 101
Increase	1 (3.3)
Decrease	3 (10)
Hemoglobin; g/dL; normal range 13.2 - 17.3	13.4 \pm 2
Decrease	9 (30)
Erythrocyte sedimentation rate; mm/hour; normal range 0-30	62.6 \pm 39.8
Increase	21 (70)
C-reactive protein; mg/L; normal range < 5	103 (5-120)
Increase	23 (76.6)
Lactate dehydrogenase; U/L; normal range < 480	971.3 \pm 603.1
Increase	12 (40)
Alanine aminotransferase; U/L; normal range < 34	53 (14-208)
Increase	14 (46.6)
$\text{PaO}_2/\text{FiO}_2$; normal range > 250	327 \pm 129
Decrease	12 (40)
O_2 Saturation; %; normal range 95-100	96 (79-99)
Decrease	9 (30)

Table 3. Characteristics of radiological findings of COVID-19 patients.

Radiologic patterns	Categories	N n = 30 (% of total)
Type of abnormality	Interstitial	2 (6.67)
	Ground glass opacities	10 (33.3)
	Consolidation	16 (53.3)
Severity	Mild	3 (10)
	Moderate	9 (30)
	Severe	18 (60)
Focality	Multifocal	16 (53.3)
Laterality	Bilateral	22 (73.3)
Centrality	Peripheral	19 (63.3)
	Central	2 (6.67)
Other	Cardiomegaly	10 (33.3)
	Nodules	2 (6.67)
	Reticular opacity	5 (16.67)
	Pleural effusion	1 (3.3)

Figure 1. (A) CXR of a 55 year-old male showed right, middle and lower sub pleural consolidation (red), left lower consolidation (blue) and homogenous consolidation and reticulo-nodular opacity (yellow). (B) 37 year-old female with sub-pleural right lower zone GGO extend to para cardiac (blue) and sub-pleural left middle and lower lung GGO (red and yellow). (C) 73 years old female with sub-pleural consolidation both of lung zone multi focal spread to para-cardial and peri-hilar with cardiomegaly showing severe typical covid-19. (D) 44 years old female with symptom only anosmia showed normal CXR.



Ten (55.55%) of the baseline ECG in this study showed ischemic sign, with the most frequent findings was T inversion in 6 (33.33%) followed by Q pathologic 3 (16.67%), ST depression 3 (16.67%), and ST elevation 1 (5.56%) respectively. There was only 1 (5.56%) case which had bundle branch block pattern (RBBB). We found that 5 (27.78%) had prolong QT interval (QTc > 460 ms) (Table 4).

Discussion

In this observational case series study, we reported and provided clinical and radiological features of COVID-19 in a secondary referral hospital in Jakarta. To our knowledge there has not been any published paper describing patients in the Indonesian capital city of Jakarta. Multiple factors such as limited, long turn over period of testing and symptoms resemblance of common tropical disease like dengue and typhoid fever resulted in delayed decision making by the clinician to make a timely intervention to reduce mortality. We hope that this early report could help clinician gain insight of which features may lead to high suspicion of COVID-19 cases and treat them promptly especially in area with limited resources.

Average age during admission was 53 years. Both male and female patient share same risk to COVID-19 infection. Despite other study that shows men are more susceptible to COVID-19 than female. There are no clear explanation regarding genetic or gender-specific

effect. Several studies have shown that the severity and mortality with COVID-19 are related to age and comorbidities including diabetes, hypertension, cardiovascular and cerebrovascular disease. The symptoms of COVID-19 are similar to other viral upper respiratory illness which include fever, cough, fatigue and shortness of breath [7, 8]. As indicated in many reports, we found that common symptoms dominated by cough, shortness of breath and fever, with uncommon presentation including vomiting and anosmia. Patients exhibiting mild to severe conditions may share the same symptoms and required further observation and management [9]. Gender is homogenous in proportion, we then try to compare percentages of severity between the groups but it was not statistically significant. (Table 5)

Major laboratory markers were tracked from patient illness onset, whereas white blood cell count value in the majority of patients were found to be normal with differential low lymphocyte count. Lymphocyte play an important role in maintaining immune homeostasis and inflammatory response. A low lymphocyte count that is less than 20% is a reliable indicator of severity and hospitalization in COVID-19 patient. While it is found that multiple mechanisms might cause lymphopenia, this require further research to confirm [10]. Previous studies has showed a depletion of CD8 T cells and dramatic loss of CD4 found in comparison to the healthy control group. Significant reduction of of the

Table 4. Electrocardiography findings of COVID-19 patients.

Categories	Sub-categories	n = 18 (% of total)
Rhythm	Sinus	17 (94.4)
	SVT	1 (5.56)
Rate	Tachycardia	9 (50)
	Normal	9 (50)
Axis	Normal	14 (77.77)
	LAD	3 (16.67)
	RAD	1 (5.56)
PR interval	Prolong (≥ 200)	0 (0.00)
	Normal (< 200)	18 (100)
Atrial Enlargement	LAE	9 (50)
	RAE	2 (11.11)
Ventricular Hypertrophy	LVH	1 (5.56)
	RVH	1 (5.56)
Bundle Branch Block	LBBB	0 (0.00)
	RBBB	1 (5.56)
Ischemic Sign	Total with ischemic sign	10 (55.55)
	T inverted	6 (33.33)
	ST depression	3 (16.67)
	ST elevation	1 (5.56)
QTC interval	Q pathologic	3 (16.67)
	Prolong (≥ 460 ms)	5 (27.78)
	Normal (< 460 ms)	13 (72.22)

Table 5. Comparison between sex, lymphocyte with severity of CXR.

Variable	Radiology severity		χ^2 p (value)*
	Mild-Moderate	Severe	
Gender			
Male	7 (43.8)	9 (56.2)	0.317
Female	4 (28.6)	10 (71.4)	
Lymphocyte			
Increased	4 (28.6)	10 (71.4)	0.47
Normal-decreased	7 (43.8)	9 (56.2)	

*Fisher's test.

CD8 and CD4 T Cells are also found in severe and critical COVID-19 patients [7, 11, 12]. Baseline lymphocyte count was lowest at early onset during hospitalisation was found to be similar with other studies in China [13]. Interestingly monocyte count were found to be increased in 10 (38.5%) patients.

Current data have demonstrated a possible multiple organ failure in patients with COVID-19. Laboratory parameters that were documented have shown hepatic insufficiency elevation of Alanine aminotransferase (ALT). CRP, LDH and ESR elevations are consistent with previous reports in patients with COVID-19. CRP is a systemic marker of acute-phase response in inflammation, infection and tissue damage. ESR is a non-specific inflammatory marker mainly reflects the change of plasma protein. However, role of inflammatory markers in monitoring the severity of COVID-19 is still controversial [14, 15]. Research suggests that these abnormalities may be related to the cytokine storm in viral infection. These data indicated that progressive immune-associated injury and inadequate adaptive immune responses could be possible mechanisms by which SARS-CoV-2 causes severe illness and fatal outcomes [16]. Value of NLR and Lymphocyte-to-C-reactive protein ratio (LCR) were cost effective to help clinical prognosis and diseases severity [17].

Marker for Acute Respiratory Distress Syndrome (ARDS), reduction of PaO₂ and ratio of PaO₂/FiO₂ of 12 (46.2%) patients and 9 (34.2%) decrease below normal value, can be explained due to disease severity based on CXR and NLR. The majority of deceased patient have shown to have SaO₂ less than 95% during admission indicating early sign of respiratory impairment [8].

CXR examination showed that most patients presented in moderate to severe stages, with only 3 (10%) mild cases. This finding suggested widespread transmission within community being under detected therefore close contact should be traced and tested. Descriptive findings such as large GGO, consolidation, bilateral and multifocal finding were consistent with

progressive and peak stages of the disease. Our results suggest that CXR plays an important role in initial screening for suspected COVID-19 patient and may obviate the need for a chest Computed Tomography (CT), thus reducing burden on CT used in this pandemic. The mild abnormality initially was not caught by our first radiologist because its subtle appearance located in the lung peripheral and should have been followed by chest CT in referral hospital. Radiologist should pay more attention to find small GGO in the early and mild disease. Wong et al reported that the most common finding was peripheral rounded consolidation, GGO and the imaging changes peaked at day 10-12 from symptom onset [18]. Recent study from the urgent care medicine in the United State of America (USA) with 636 CXR involved show relatively different results. They found that GGO and interstitial changes as the predominant findings indicating the disease was early and mild [19].

Cardiac involvement is prevalent and prognostic in COVID-19 and could possibly impair cardiac functions by causing cardiac injury through direct infection (through ACE2 receptor binding and up regulation of ACE2) or cardiac stress due to hypoxemia. Binding of SARS CoV-2 also occur through CD209 in macrophages, which promote virus invasion to cardiac and vascular tissues. COVID 19 infection could also induce plaque rupture resulting in type 1 myocardial infarction. It is also known that underlying heart disease increases the possibility of patient to contract COVID-19 and furthermore jeopardize the condition for the infected patient [20, 21].

In this study, we observe most of the positive COVID-19 patient presented with ischemic sign on their baseline ECG. Half of the presented ECG showed tachycardia, which were suggested due to other related symptoms such as fever, pain, and shortness of breath. It is also shown that half of the presented ECG in this study have left atrial (LA) enlargement that is related to CAD risk factors such as chronic hypertension. In this study, five of ten patients with ischemic sign on ECG were categorized in severe group. The expression of

mediators due to that condition could lead to cytokine release that may worsen the severity of SARS-CoV-2 infection. This finding was considered parallel with previous statement of European Society of Cardiology that in the group of patient who died from corona virus, 10.6% had CAD [21]. The limitations of this study included a single center in a secondary hospital observational design; the small number of confirmed cases of COVID-19 and incomplete ECG data may limit the interpretation and the clinical relevance of our data. Hence, there has yet any data published in this concern.

Conclusion

Based on our findings, most cases of COVID-19 admitted in secondary referral hospital were already in moderate to severe stages. This is most likely due to late referral from primary care and unspecific clinical features resemblance of other infectious diseases such as dengue, typhoid fever or other influenza. Inflammation marker, Neutrophil-to-lymphocyte ratio (NLR) and CXR are cost effective findings and can be used as a disease severity marker in primary health care to determine further referral. Furthermore, since cardiac dysfunction are also present in most cases, this warrant further investigation. Public awareness of signs, symptoms, early diagnostic testing protocols and case findings were important to reduce severity of diseases.

Acknowledgements

We thank staff of Budhi Asih hospital that has contributed in providing data and medical records and also to all our patients that has been involved in this study.

References

1. World Health Organization (WHO). Coronavirus disease (COVID-19) situation reports. Available: <https://www.who.int/emergencies/diseases/novel-coronavirus-2019/situation-reports>. Accessed 11 March 2020.
2. Coronaviridae Study Group of the International Committee on Taxonomy of Viruses (2020) The species severe acute respiratory syndrome-related coronavirus classifying 2019-nCoV and naming it SARS-CoV-2. *Nat Microbiol* 5;536-44.10.1038/s41564-020-0695-z.
3. Zhou F, Yu T, Du R, Fan G, Liu Z, Xiang J, Wang Y, Song B, Gu X, Guan L, Wei Y, Li H, We X, Xu J, Tu S, Zhang Y, Chen H, Cao B (2020). Clinical course and risk factors for mortality of adult inpatients with COVID-19 in Wuhan, China: a retrospective cohort study. *Lancet* 395:1054-62.
4. Data pemantauan COVID-19. Jakarta. 2020. Available: <https://corona.jakarta.go.id/id/data-pemantauan>. Accessed 11 March 2020.
5. British Society of Thoracic Imaging (BSTI). from Rodrigues JCL, Hare SS, Edey A, Devaraj A, Jacob J, Johnstone A, McStay R, Nair A, Robinson G (2020). An update on COVID-19 for the radiologist - a British Society of Thoracic Imaging statement. *Clinical Radiology* 75:323-5.
6. Warren MA, Zhao Z, Koyama T, Bastarache JA, Shaver CM, Semler MW, Rice TW, Calfee CS, Ware LB (2018) Severity scoring of lung edema on the chest radiograph is associated with clinical outcomes in ARDS. *Thorax* 73(9):840-6.
7. Feng Y, Ling Y, Bai T, Xie Y, Huang J, Li J, Xiong W, Yang D, Chen R, Lu F, Lu Y, Liu X, Chen Y, Li X, Li Y, Summah HD, Lin H, Yan J, Zhou M, Lu H, Qu J (2020). COVID-19 with different severity: A multi-center study of clinical features. *Am J Respir Crit Care Med* 4: 1-53.
8. Huang C, Wang Y, Li X, Ren L, Zhao J, Hu Y, Zhang L, Fan G, Xu J, Gu X, Cheng Z, Yu T, Xia J, Wei Y, Wu W, Xie X, Yin W, Li H, Liu M, Xiao Y, Gao Z, Jin Q, Wang J, Cao B (2020). Clinical features of patients infected with 2019 novel coronavirus in Wuhan, China. *Lancet* 395:497-506.
9. Du R-H, Liang L-R, Yang C-Q (2020). Predictors of Mortality for Patients with COVID-19 Pneumonia Caused by SARS-CoV-2: A Prospective Cohort Study. *Eur Respir in press* <https://doi.org/10.1183/13993003.00524-2020>.
10. Chavez S, Long B, Koyfman A, Liang SY (2020). Coronavirus Disease (COVID-19): a primer for emergency physicians. *Am J Emerg Med* 3(36):1-10.
11. Chen T, Wu D, Huilong C, Yan W, Yang D, Chen G, Ma K, Xu D, Yu H, Wang H, Wang T, Guo W, Chen J, Ding C, Zhang X, Huang J, Han M, Li S, Luo X, Zhao J, Ning Q (2020). Clinical characteristics of 113 deceased patients with coronavirus disease 2019: retrospective study. *BMJ* 368:m1091.
12. Smith JC, Sausville EL, Girish V, Yuan ML, John KM, Sheltzer JM (2020). Cigarette smoke exposure and inflammatory signaling increase the expression of the SARS-CoV-2 receptor ACE2 in the respiratory tract. *Developmental Cell*. 53:514-29.
13. Zeng F, Huang Y, Guo Y, Yin M, Chen X, Xiao L, Deng G (2020). Association of inflammatory markers with the severity of COVID-19: a metaanalysis. *IJID*, 96:467-74.
14. Dong X, Cao YY, Lu XX, Zhang JJ, Du H, Yan YQ, Akdis CA, Gao YD (2020). Eleven faces of coronavirus disease 2019. *Allergy*;75(7):1699-1709.
15. Wang L, Gao Y, Lou LL, Zhang G (2020) The clinical dynamics of 18 cases of COVID-19 outside of Wuhan, China. *Eur Respir J*; in press.

16. Lin L, Lu L, Cao W, Li T (2020). Hypothesis for potential pathogenesis of SARS-CoV-2 infection—a review of immune changes in patients with viral pneumonia. *Emerg Microbes Infect* 9(1):727-32.
17. Atkinson B, Petersen F (2020) SARS-CoV-2 shedding and infectivity. *Lancet* 25;395(10233):1339-40.
18. Wong HYF, Lam HYS, Fong AHT, Leung ST, Chin TWY, Lam HYS, Fong AHT, Leung ST, Chin TWY, Lo CSY, Lui MMS, Lee JCY, Chiu KWH, Chung T, Lee EYP, Wan EYFW, Hung FNI, Lam TPW, Kuo M, Ng MY (2019). Frequency and distribution of chest radiographic findings in COVID-19 positive patients. *Radiology* 0 0:0.
19. Weinstock MB, Echenique A, Russell JW, Leib A, Miller JA, Cohen DJ, Waite S, Frye A, Illuzzi FA (2020) Chest x-ray findings in 636 ambulatory patients with COVID-19 presenting to an urgent care center: a normal chest x-ray is no guarantee. *J Urgent Care Med* 14(7):13-18.
20. Akhmerov A, Marban E (2020) COVID-19 and the Heart. *Circ Res* 4:1-33.
21. ESC Guidance for the Diagnosis and Management of CV disease during the Covid-19 Pandemic (2020) Available: <https://www.escardio.org/Education/COVID-19-and-Cardiology/ESC-COVID-19-Guidance>. Accessed 3 April 2020.

Corresponding author

Muhammad Hafiz, MD.

Head of Department of Pulmonology and Respiratory Medicine, Budhi Asih Hospital.

Jalan Saleh, no.14 Rt 005 North sukabumi, West Jakarta 11540

Tel: +62813-19860254

Fax: +6221-8009157

Email: mhafiz.alkaf@gmail.com

Conflict of interests: No conflict of interests is declared.