

Original Article

## The short-term effect of air pollution on the incidence of pulmonary tuberculosis in Chongqing, China, 2014-2020

Xinyi Deng<sup>1</sup>, Dianguo Xing<sup>2</sup>, Zhiyi Chen<sup>1</sup>, Yang Zou<sup>1</sup>, Ying He<sup>1</sup>, Saijuan Chen<sup>1</sup>, Qiuting Wang<sup>1</sup>, Yan Zhang<sup>1</sup>

<sup>1</sup> School of Public Health, Research Center for Medicine and Social Development, Innovation Center for Social Risk Governance in Health, Research Center for Public Health Security, Chongqing Medical University, Chongqing, China

<sup>2</sup> Office of Health Emergency, Chongqing Municipal Health Commission, Chongqing, China

### Abstract

**Introduction:** Tuberculosis (TB) is one of the top ten causes of death in the world. The purpose of this study was to explore the relationship between the short-term exposure to air pollutants and the risk of pulmonary TB in Chongqing.

**Methodology:** A distributed lag nonlinear model was used to explore the effect of short-term exposure to air pollutants on the risk of pulmonary TB. Stratified analysis was used to explore the impact of gender and age on the risk of pulmonary TB.

**Results:** There were 170,934 confirmed cases of pulmonary TB in Chongqing from January 1<sup>st</sup>, 2014 to December 30<sup>th</sup>, 2020. There was a positive correlation between the exposure to particulate matter with aerodynamic diameter less than 2.5  $\mu\text{m}$  (PM<sub>2.5</sub>), particulate matter with aerodynamic diameter less than 10  $\mu\text{m}$  (PM<sub>10</sub>) ozone (O<sub>3</sub>) and the incidence risk of TB. The maximum lag-specific relative risk (RR) of pulmonary TB was 1.012 (95% CI: 1.001-1.023, 14 days delay) for each 10  $\mu\text{g}/\text{m}^3$  increase in PM<sub>2.5</sub>; 1.010 (95% CI: 1.003-1.017, 14 days delay) for each 10  $\mu\text{g}/\text{m}^3$  increase in PM<sub>10</sub>; and 1.002 (95% CI: 1.000-1.004, 2 days delay) for each 10  $\text{mg}/\text{m}^3$  increase in O<sub>3</sub>. Stratified analysis showed that the exposure effects of PM<sub>2.5</sub>, PM<sub>10</sub> and O<sub>3</sub> were different between different genders and age.

**Conclusions:** This study suggested that exposure to PM<sub>2.5</sub>, PM<sub>10</sub>, and O<sub>3</sub> was associated with the risk of pulmonary TB, and the risk was higher for males than females, while the exposure to PM<sub>2.5</sub> and PM<sub>10</sub> was riskier for people aged 15-60 years.

**Key words:** tuberculosis, air pollution, DLNM.

*J Infect Dev Ctries* 2023; 17(12):1722-1731. doi:10.3855/jidc.17217

(Received 07 August 2022 – Accepted 07 May 2023)

Copyright © 2023 Deng *et al.* This is an open-access article distributed under the Creative Commons Attribution License, which permits unrestricted use, distribution, and reproduction in any medium, provided the original work is properly cited.

### Introduction

Tuberculosis (TB) is caused when *Mycobacterium tuberculosis* infects human lungs. It is one of the legal class B infectious diseases in China and the leading cause of death from a single infectious disease in the world [1]. According to the World Health Organization (WHO) estimate, there were about 10.6 million new cases of TB in the world in 2021 [2]. China was one of the 30 countries with high burden of TB. In 2021, the number of new cases was about 780,000, ranking third in the world after India and Indonesia [2]. China has invested hundreds of millions of dollars in the prevention and treatment of TB every year. However, in the case of drug-resistant TB and multi drug-resistant TB, treatment other than first-line anti TB drugs was required, and regular reexamination, such as computed tomography (CT) and liver and kidney function, also caused considerable mental pressure and economic burden to the patients [3,4]. Therefore, the prevention and treatment of TB still needs more attention.

Air pollutants are one of the main causes of the global disease burden, and have gradually become the focus of attention in recent years [5]. Research had shown that air pollutants might reduce the ability of macrophages to induce innate and adaptive immune responses, leading to a decrease in the phagocytic capacity of alveolar macrophages, a decrease in anti-tuberculosis immune function, a decrease in the ability of the lung tissue to resist infection, and a decrease in local defense function, thereby increasing the risk of infection with pulmonary TB [6]. Therefore, the correlation between air pollution and TB has attracted increasing attention.

With the development and deepening of epidemiological research, more studies showed that air pollutants had an impact on pulmonary TB. One study summarized the relationship and potential mechanism between respiratory bacterial infection and air pollution, and described the relationship between various air pollutants and the incidence of TB [7]. One

observational study showed that the positive rate of sputum test of pulmonary tuberculosis patients was significantly correlated with the concentration of fine particles near the residence [8]. Another study showed that the most significant pollutant affecting pulmonary TB was particulate matter with aerodynamic diameter less than 2.5  $\mu\text{m}$  (PM<sub>2.5</sub>), and other pollutants also showed significant correlations [1]. Subsequently, scholars quantitatively analyzed the correlation between atmospheric pollutants and pulmonary TB. For example, a study in Northern California found that, compared with the concentration of the lowest five quantile, the concentration of carbon monoxide (CO) and nitrogen dioxide (NO<sub>2</sub>) in the highest five quantile at the individual level in two years was associated with an increase of risk of pulmonary TB by 50% and 42% respectively [9]. A study in Taiwan found that when the average concentration of NO<sub>x</sub> increased by 18.8  $\mu\text{g}/\text{m}^3$  every two years, the risk of pulmonary TB increased by 21% [10]. A study based in Hong Kong and Beijing found that the monthly PM<sub>2.5</sub> concentration in winter in both cities was significantly positively correlated with the reported number of TB in the following 3-6 months [11]. A study in South Korea found that the risk of TB increased when the annual average concentration of sulfur dioxide (SO<sub>2</sub>) increased [12].

To sum up, more studies had focused on the relationship between long-term exposure to air pollutants and the risk of TB, mainly using time series data at weekly, monthly or annual levels. There were few studies on the impact of short-term exposure to air pollutants on the risk of pulmonary TB, and the results were inconsistent [13,14]. In this study, we collected the data of TB incidence and the corresponding air pollutants and meteorological data from 2014 to 2020. The distribution lag nonlinear model (DLNM) was adopted to explore the relationship between the short-term exposure to air pollutants and the risk of pulmonary TB, and stratified analysis was conducted to find out the differences between different genders and different age groups.

## Methodology

### *Data collection*

The daily pulmonary TB data from January 1<sup>st</sup>, 2014 to December 31<sup>st</sup>, 2020 of 38 districts and counties in Chongqing were obtained from Chongqing Center for Disease Control and Prevention. According to the national guidelines on tuberculosis control, pulmonary TB cases or suspected cases detected in any health facilities must be reported through the infectious disease reporting system within 24 hours. The diagnosis

of pulmonary TB was based on the Diagnosis for Pulmonary Tuberculosis (WS 288-2017) issued by the National Health Commission of People's Republic of China [15]. This study included all clinical and confirmed cases. The data of air pollutants used in this study were from Chongqing Environmental Monitoring Center. The daily concentrations of air pollutants in Chongqing were obtained from Chongqing Environmental Monitoring Center, including data on particulate matter with PM<sub>2.5</sub>, PM<sub>10</sub>, SO<sub>2</sub>, NO<sub>2</sub>, CO and O<sub>3</sub> concentrations. O<sub>3</sub> was the average value of the largest continuous 8-hour ozone concentration in a day as the pollution level of that day, and the other five pollutants were the 24-hour average concentrations. The daily meteorological variables of the same period, including mean temperature, precipitation, average relative humidity and sunshine hours for the same period were collected from China Meteorological Data Sharing Service System.

### *Statistical analysis*

First, DLNM was established separately for each pollutant to explore the relationship between short-term exposure of each air pollutant and the risk of pulmonary TB. Next, we divided the population and used subgroup analysis to identify differences between different genders and age groups.

Previous studies had suggested that the number of reported cases of TB followed a quasi-Poisson distribution [14,16]. Therefore, in this study, a time-series DLNM with quasi-Poisson regression was applied to assess the effect of daily air pollution on daily reported TB [14,18]. DLNM can describe the changes of dependent variables in independent variable dimension and lag dimension at the same time by constructing cross basis function, which is widely used to explore the relationship between environmental factors and health outcomes [18,19].

In order to explore the influence of exposure to six air pollutants on the risk of TB incidence, we used the function of natural cubic spline (6 degrees of freedom per year) to control long-term trends and seasonal variations. We also controlled for the impact of the day of the week and holiday effects. Meanwhile, the ns function with 3 degrees of freedom was used to control nonlinear impact of meteorological factors on the risk of TB. Finally, we inquired two-dimensional connection between air pollutants and the exposure, lag and response of TB cases by the cross-basis functions. According to the purpose of our study and the length of TB incubation period, the maximum lag day was set at

14 days. The final single-pollutant model was as follows:

$$Y_t \sim \text{Poisson}(\mu_t)$$

$$\log[E(Y_t)] = \alpha + \sum_{l=10}^L \gamma_l W_{t-l} + \text{dow} + \text{holiday} + \text{ns}(\text{date}) + \text{ns}(\text{tem}_t) + \text{ns}(\text{ruh}_t) + \text{ns}(\text{pre}_t) + \text{ns}(\text{ssd}_t)$$

Where:  $Y_t$  represents the incidence of TB;  $\alpha$  is the intercept;  $W_{(t-l)}$  is a cross-basis function, which specifies the exposure-lag-response relationship simultaneously in the exposure-response and lag-response dimensions. Dow and Holiday are the categorical variables indicating the day of the week and the public holiday, respectively. Daily mean temperature, precipitation, average relative humidity and sunshine hours, as potential confounding variables, were modeled as a natural cubic spline with 3 degrees of freedom.  $\text{tem}_t$  is the mean temperature (°C);  $\text{ruh}_t$  is the average relative humidity (%);  $\text{pre}_t$  is the precipitation (mm);  $\text{ssd}_t$  is the sunshine hours (h).

When calculating the relative risk (RR), the average value of air pollutants was defined as the reference value. We also calculated the RR and 95% confidence interval for TB when the pollutant concentration increased by 10 units. In addition, we also explored the differences in effects between different subgroups to determine the impact of pollutant exposure on different genders (male, female) and age groups (0-15 years old, 15-60 years old,  $\geq 60$  years old).

All data analyses were performed in R 4.2.0, with the “dlnm” package to fit the DLNM. Two-sided  $p$  values less than 0.05 were considered as statistically significant.

## Results

### Descriptive analysis

Table 1 lists the characteristics of pulmonary TB cases, air pollutants, gender distribution and age distribution in this study. The daily average concentration of  $\text{PM}_{2.5}$  was  $46.16 \mu\text{g}/\text{m}^3$  (8~212 $\mu\text{g}/\text{m}^3$ ),  $\text{PM}_{10}$  was  $71.35 \mu\text{g}/\text{m}^3$  (12~293 $\mu\text{g}/\text{m}^3$ ),  $\text{SO}_2$  was  $12.58 \mu\text{g}/\text{m}^3$  (4~80 $\mu\text{g}/\text{m}^3$ ), CO was  $0.96 \text{mg}/\text{m}^3$  (0.4~3.4  $\text{mg}/\text{m}^3$ ),  $\text{NO}_2$  was  $41.5 \mu\text{g}/\text{m}^3$  (9~96  $\mu\text{g}/\text{m}^3$ ),  $\text{O}_3$  was  $70.35 \mu\text{g}/\text{m}^3$  (0~277  $\mu\text{g}/\text{m}^3$ ). There were 170,934 cases of TB in the city from 2014 to 2020, including 50,504 women and 120,430 men. Among them, 1% were under 15 years old, 30.94% were over 60 years old, and 66.06% were between 15 and 60 years old. The distribution of TB cases and air pollutants from 2014 to 2020 was shown in Figure 1.

### Association between $\text{PM}_{2.5}$ and the incidence of pulmonary TB

By establishing a model of the relationship between daily  $\text{PM}_{2.5}$  concentration and the cases of pulmonary TB, the exposure effect of  $\text{PM}_{2.5}$  within 14 lag days could be obtained. As shown in Figure 2, when there was a  $10 \mu\text{g}/\text{m}^3$  increase in  $\text{PM}_{2.5}$  concentration, the risk of TB increased, the association persisted over a 13- to 14-day delay, and the correlation was statistically significant (RR = 1.012, 95% confidence interval (CI): 1.001-1.023, 14 days delay). Stratified analysis showed that the effect of  $\text{PM}_{2.5}$  exposure on the risk of pulmonary TB was different between genders, and the increasing  $\text{PM}_{2.5}$  exposure concentration was related to the increasing incidence risk for male (RR = 1.013, 95% CI: 1.002-1.024, 14 days delay), while no similar effect was found in female. When stratified by age, only the 15-60-year-old group showed an increasing risk when exposed to an increasing concentration of  $\text{PM}_{2.5}$ .

**Table 1.** Basic characteristics of reported cases of pulmonary TB and air pollutants in Chongqing from 2014 to 2020.

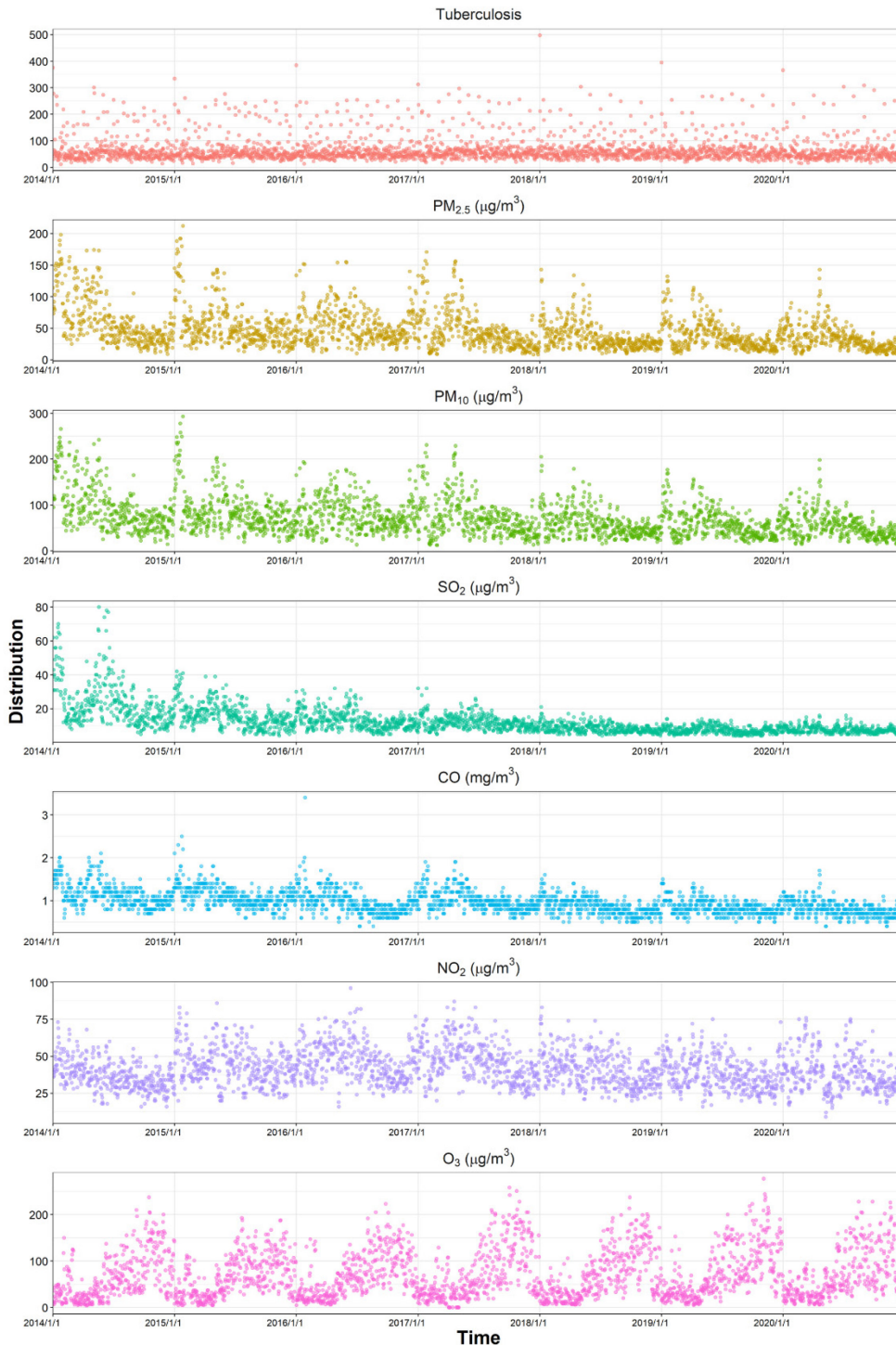
Variables	n (%)	Mean	Centiles				
			Min	25%	50%	75%	Max
<b>Atmospheric pollutants (<math>\mu\text{g}/\text{m}^3</math>)</b>							
$\text{PM}_{2.5}$	-	46.16	8	26	38	57	212
$\text{PM}_{10}$	-	71.35	12	43	62	88	293
$\text{SO}_2$	-	12.58	4	7	10	15	80
CO ( $\mu\text{g}/\text{m}^3$ )	-	0.96	0.4	0.8	0.9	1.1	3.4
$\text{NO}_2$	-	41.5	9	32	40	49	96
$\text{O}_3$	-	70.35	0	29	57	103	277
<b>TB case</b>							
<b>Total</b>	170934 (100)	66.88	12	41	52	69	497
<b>Male</b>	120430 (70.45)	47.12	6	29	37	49	356
<b>Female</b>	50504 (29.55)	19.76	2	12	16	22	141
<b>Age &lt; 15 years</b>	1722 (1.00)	0.66	0	0	0	1	6
<b>Age 15-60 years</b>	116332 (68.06)	44.4	5	27	35	47	309
<b>Age <math>\geq 60</math> years</b>	52880 (30.94)	20.18	1	11.75	16	22	174

### Association between PM<sub>10</sub> and the incidence of pulmonary TB

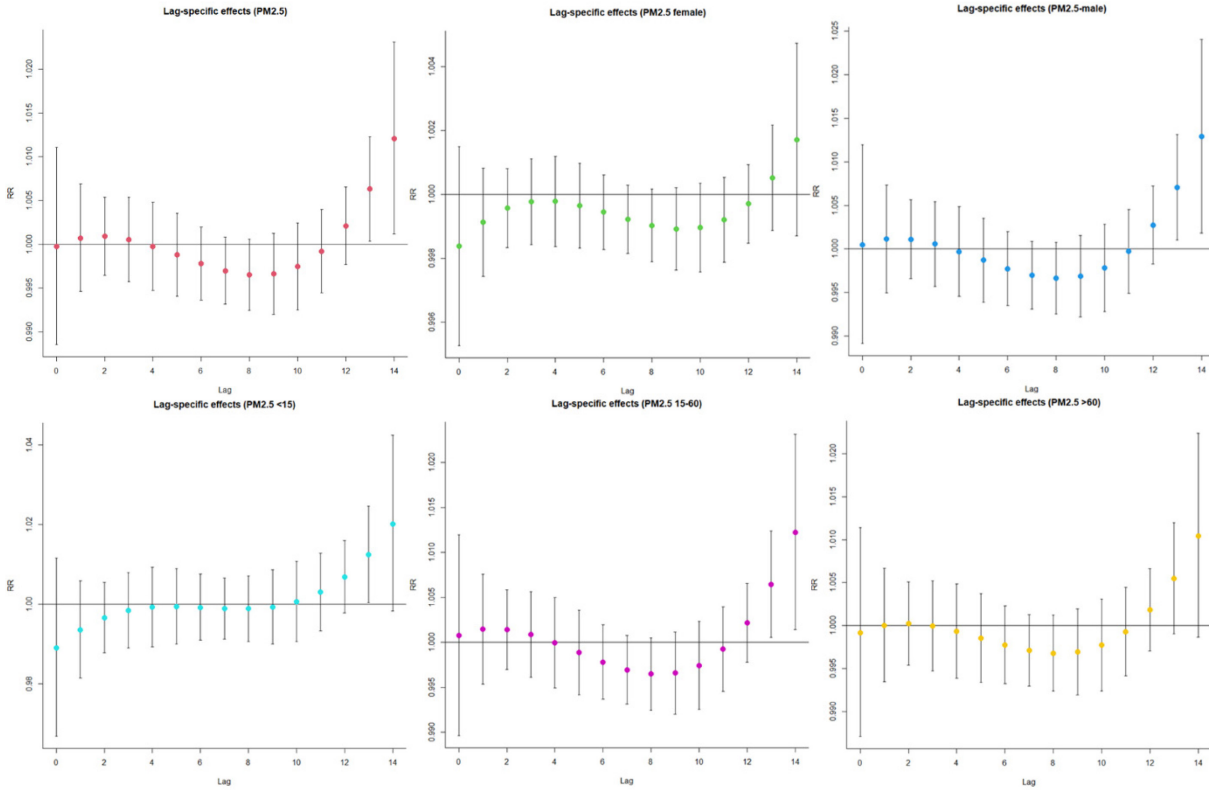
By establishing a model of the relationship between daily PM<sub>10</sub> concentration and the cases of pulmonary TB, the exposure effect of PM<sub>10</sub> within 14 lag days could be obtained. As shown in Figure 3, when there is a 10 µg/m<sup>3</sup> increase in PM<sub>10</sub> concentration, the risk of

pulmonary TB increased, the association persisted over a 13- to 14-day delay, and the correlation was statistically significant (RR = 1.010, 95% CI: 1.003-1.017, 14 days delay). Stratified analysis showed that both males and females showed an increasing risk when facing increasing PM<sub>10</sub> exposure.

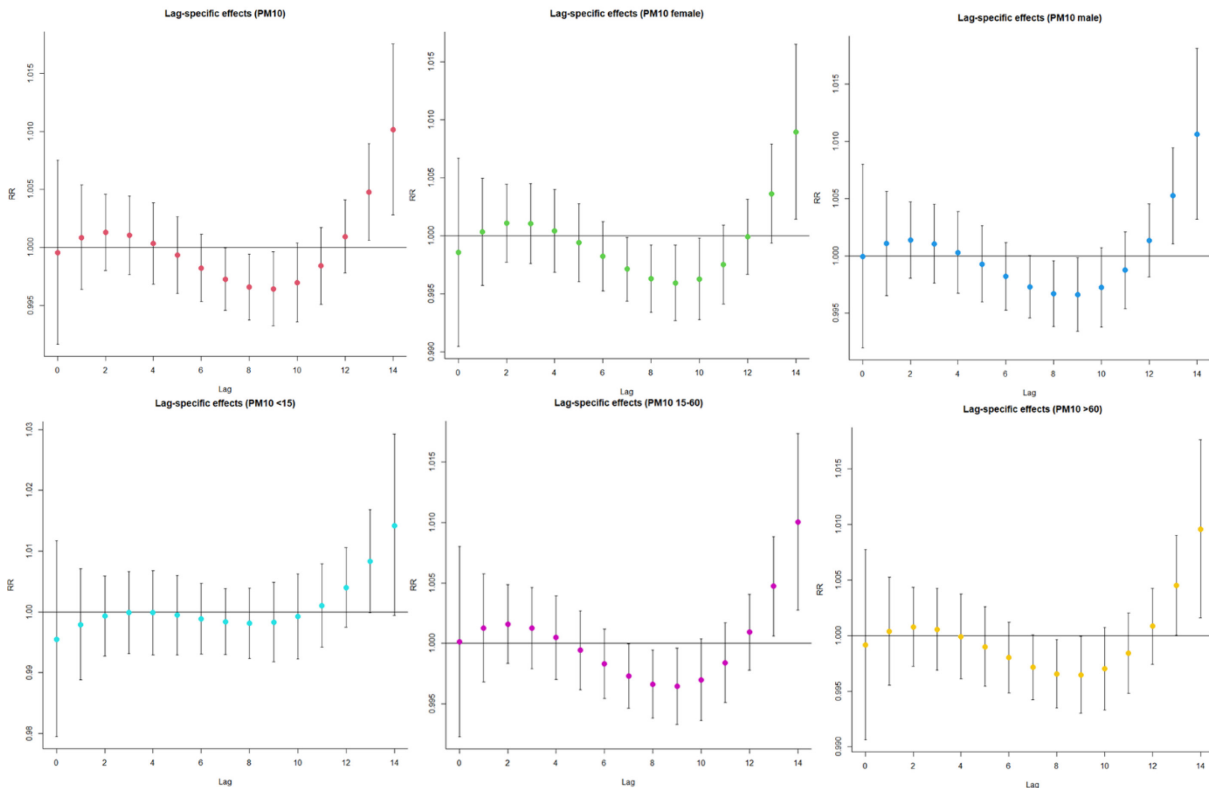
**Figure 1.** Distribution of pulmonary TB cases, PM<sub>2.5</sub>, PM<sub>10</sub>, SO<sub>2</sub>, NO<sub>2</sub>, CO and O<sub>3</sub> in Chongqing from 2014 to 2020.



**Figure 2.** Lag-specific relative risks (95% CI) of per 10-unit increase in the daily concentrations of PM<sub>2.5</sub> on pulmonary TB. The impact of PM<sub>2.5</sub> exposure on different genders and age groups.



**Figure 3.** Lag-specific relative risks (95% CI) of per 10-unit increase in the daily concentrations of PM<sub>10</sub> on pulmonary TB. The impact of PM<sub>10</sub> exposure on different genders and age groups.



Among them, the single day risk of males was higher than that of females, and the lag days were longer (RR = 1.011, 95% CI: 1.003-1.018, 14 days delay). When stratified by age, only the 15-60-year-old and > 60-year-old groups showed an increasing risk of PM<sub>10</sub> exposure. Among them, the single day risk of the 15-60-year-old subgroup was higher than that of the > 60-year-old subgroup, in which the lag days were longer.

*Association between O<sub>3</sub> and the incidence of pulmonary TB*

By establishing a model of the relationship between daily O<sub>3</sub> concentration and the cases of pulmonary TB, the exposure effect of O<sub>3</sub> within 14 lag days could be obtained. As is shown in Figure 4, when there was a 10 µg/m<sup>3</sup> increase in O<sub>3</sub> concentration, the risk of pulmonary TB increased; the association persisted over a 2-day delay, and the correlation was statistically significant (RR = 1.002, 95% CI: 1.000-1.004, 2 days delay). Stratified analysis showed that the effect of O<sub>3</sub> exposure on the risk of pulmonary TB was different between genders, and the increasing O<sub>3</sub> exposure concentration was related to the increasing incidence risk in males (RR = 1.014, 95% CI: 1.002-1.024, 2 days delay), while no similar effect was found in females. When stratified by age, only the < 15-year-old and 15-

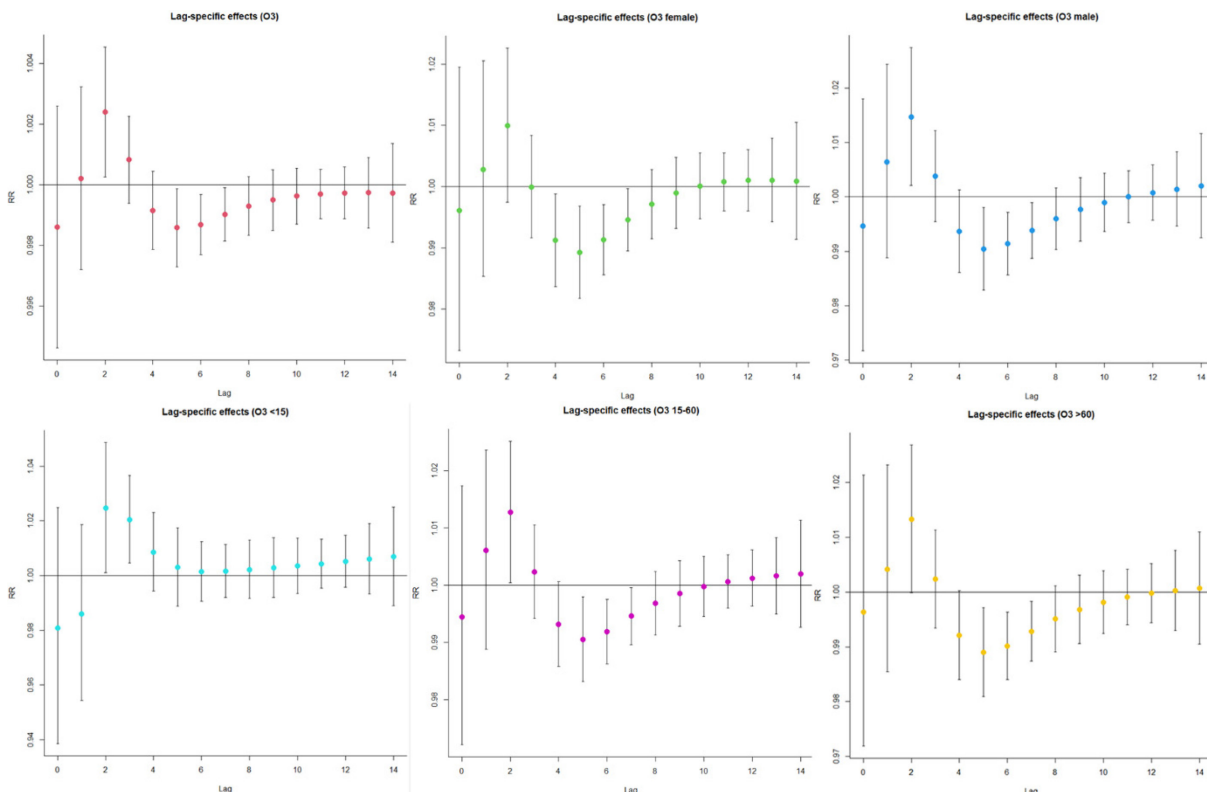
60-year-old groups showed an increasing risk of O<sub>3</sub> exposure. Among them, the single day risk of the < 15-year-old subgroup was higher than that of the 15-60-year-old subgroup, in which the lag days were longer.

**Discussion**

In this study, DLNM was used to explore the relationship between short-term exposure to air pollutants and the risk of pulmonary TB, and stratified analysis was carried out to explore the differences between different gender and age groups. It was found that the incidence risk of pulmonary TB in Chongqing was related to the exposure to air pollutants, and there was a positive correlation between the concentrations of PM<sub>2.5</sub>, PM<sub>10</sub>, O<sub>3</sub> and the risk of pulmonary TB. Stratified analysis showed that the exposure effects of PM<sub>2.5</sub>, PM<sub>10</sub> and O<sub>3</sub> were different between gender, and the risk of male was higher than that of female; the risk of short-term exposure to PM<sub>2.5</sub> and PM<sub>10</sub> was greater in people aged 15-60 years.

The results of this study showed that there was a correlation between the increase of PM<sub>2.5</sub> exposure and the incidence risk of TB, which had a certain lag effect. This was consistent with the results reported by many research institutes in Los Angeles, Shanghai, Beijing and Hong Kong [20–22]. Being a type of atmospheric

**Figure 4.** Lag-specific relative risks (95% CI) of per 10-unit increase in the daily concentrations of O<sub>3</sub> on pulmonary TB. The impact of O<sub>3</sub> exposure on different genders and age groups.



suspended particles, PM<sub>2.5</sub> could carry harmful substances in the environment and external impurities such as benzopyrene, heavy metals, pathogenic microorganisms, metal ions and minerals into the respiratory tract, and may even reach bronchioles and alveoli [1]. Harmful substances entering the alveoli were cleared by the phagocytosis of macrophages, but some would still deposit in the lungs and caused local inflammatory reaction. As *Mycobacterium tuberculosis* was an obligate aerobic bacterium, its growth and reproduction could not be separated from metal elements such as iron, while PM<sub>2.5</sub>, which carried high-level transition metals in the environment, increased the content of iron, which may create a good environment for the growth and reproduction of *Mycobacterium tuberculosis* [23,24]. In vitro evidence from human alveolar cells showed that when alveolar cells were exposed to simulated PM<sub>2.5</sub> environment, the survival rate of *Mycobacterium tuberculosis* was higher than that of the unexposed group, which indicated that PM<sub>2.5</sub> exposure may improve the survival rate of *Mycobacterium tuberculosis* and accelerate the incidence of TB [25]. In addition, a study also explained the relevant reasons from the perspective of immunology [26]. They found that exposure to PM<sub>2.5</sub> inhibited the expression of TNF- $\alpha$  factor in peripheral blood mononuclear cells before an individual was infected with *Mycobacterium tuberculosis*. It is worth noting that TNF- $\alpha$  factor inhibited the proliferation of tubercle bacillus in human body by mediating the formation and maintenance of granuloma. Therefore, the above reasons explained that the exposure of PM<sub>2.5</sub> may reduce human immunity and provide a favorable environment for the growth and reproduction of *Mycobacterium tuberculosis*, which may accelerate the process of pulmonary TB. In this study, we also found that there may be a certain lag effect in the adverse effects of PM<sub>2.5</sub> exposure, which may be because most people infected with *Mycobacterium tuberculosis* did not have obvious clinical symptoms and the onset was not rapid. Thus, patients might not seek medical treatment immediately after a certain mild symptom, but choose to take medicine for remission. Therefore, this might also have a lag effect on the correlation between them.

This study also found that there was a statistical correlation between the increase of PM<sub>10</sub> exposure and the increasing risk of TB, and the correlation had a certain lag effect. A case-control study conducted in Taiwan showed that exposure to PM<sub>10</sub> increased the risk of positive sputum test in patients with pulmonary TB [27]. It is worth noting that in this study, we found that

the exposure effect of PM<sub>10</sub> was similar to that of PM<sub>2.5</sub>, and the lag period was also concentrated in 13-14 days. This may be because PM<sub>2.5</sub> was included in the monitored PM<sub>10</sub>. Therefore, the main harmful substances in PM<sub>10</sub> may be PM<sub>2.5</sub> and its related toxic substances and external impurities. The results of correlation analysis also showed that the correlation between PM<sub>10</sub> and PM<sub>2.5</sub> was strong, and the correlation coefficient reached 0.96 (Supplementary Table 1), which may be one of the reasons why the effects of PM<sub>10</sub> and PM<sub>2.5</sub> were similar. Relevant in vitro experimental results showed that, as with PM<sub>2.5</sub>, the exposure of PM<sub>10</sub> would also make the colony count of *Mycobacterium tuberculosis* higher than that of the unexposed group [25]. The results of cellular experiments using alveolar type II epithelial cells also showed that the levels of important inflammatory factors involved in the immune response of epithelial cells exposed to PM<sub>10</sub> were also significantly decreased [28].

Stratified analysis of particulate matter showed that PM<sub>10</sub> and PM<sub>2.5</sub> still showed a high degree of similarity in subgroup analysis. The results showed that the increase of PM<sub>2.5</sub> and PM<sub>10</sub> exposure was related to the increased risk of male and 15–60-year-old age group, which may be because compared with female and minors, male and adults were more likely to work outdoors, which increased the exposure frequency of particulate matter, thereby increasing the risk of pulmonary TB. In addition, compared to females, males were more likely to be affected by unhealthy lifestyles such as smoking and drinking, which were risk factors for TB [29]. Studies have shown that nicotine in alcohol and cigarettes can inhibit the cellular immune function and the production of TNF- $\alpha$  factor, thus affecting human immunity [30]. For the middle-aged and elderly TB population, particle exposure was more likely to reduce their immune level, and caused the corresponding inflammatory reaction and respiratory symptoms, thereby increasing the incidence risk [31].

This study also explored the relationship between O<sub>3</sub> and the incidence of pulmonary TB. The results showed that the increase of O<sub>3</sub> exposure was related to the acute increase of the incidence risk of TB, and the correlation was statistically significant with delay of 2 days. Previous studies showed that O<sub>3</sub> exposure was associated with mortality, stroke, myocardial infarction and even appendicitis [32–37]. However, no positive association between O<sub>3</sub> and tuberculosis has been found [8,9,27,38–40]. The positive correlation found in this study can be explained from the following aspects: O<sub>3</sub>, as a gas with strong oxidation, could undergo oxidation

reaction at low temperature and participate in a variety of chemical reactions in the atmospheric environment. After being inhaled by human body, O<sub>3</sub> with strong oxidation would cause cough, dyspnea and decline of pulmonary function, which might aggravate the condition of TB patients and increase the risk of disease [41]. In addition, O<sub>3</sub> could also participate in the reaction of unsaturated fatty acids, amino acids and other proteins in organisms, causing fatigue, cough, chest tightness, chest pain, skin wrinkles, nausea and headache, accelerated pulse, memory decline, decreased vision and other symptoms in people who had been directly exposed to high concentration O<sub>3</sub> for a long time, which might accelerate the process of pulmonary TB and increase the incidence risk [42]. After the exposure effect of O<sub>3</sub> was stratified by age and gender, the incidence risk of TB in male, 0-15 years old and 15-60 years old age groups was statistically correlated with the increase of O<sub>3</sub> concentration. Compared to females, males had a higher chance of exposure to O<sub>3</sub> in outdoor work, which increased the frequency of O<sub>3</sub> exposure. There was little evidence about the sensitivity of different age groups to O<sub>3</sub>.

However, this study also had some limitations. First, the exposure index of air pollutants was considered by calculating the average value of all detection stations in Chongqing, without considering the spatial heterogeneity of air pollution in different districts and counties. Secondly, this study was limited to Chongqing, which meant that our research results should be carefully extended to other places. Finally, we did not consider the impact of other confounding factors, such as economic status and smoking history.

## Conclusions

This study found that there was a positive lag effect between the exposure to PM<sub>2.5</sub>, PM<sub>10</sub>, O<sub>3</sub> and the incidence risk of pulmonary TB in Chongqing. The risk of being male was higher than that of female, while the short-term exposure to PM<sub>2.5</sub>, PM<sub>10</sub> was riskier for the 15-60-year-old age group. The disease burden caused by a large number of people exposed to air pollution and the cumulative effect of air pollution was worthy of attention. Therefore, in order to protect patients with TB and save medical and social resources, it is necessary for government departments to formulate targeted publicity and preventive measures according to the quality of local air.

## Funding

This research was funded by Chongqing Social Science Planning Project (Grant No. 2019YBGL057).

## References

1. Popovic I, Magalhaes RJS, Ge E, Marks GB, Dong G-H, Wei X, Knibbs LD (2019) A systematic literature review and critical appraisal of epidemiological studies on outdoor air pollution and tuberculosis outcomes. *Environ Res* 170: 33-45. doi: 10.1016/j.envres.2018.12.011.
2. WHO (2022) Global tuberculosis report 2022. Available: <https://www.who.int/teams/global-tuberculosis-programme/tb-reports/global-tuberculosis-report-2022>. Accessed: 30 June 2022.
3. Huynh GH, Klein DJ, Chin DP, Wagner BG, Eckhoff PA, Liu R, Wang L (2015) Tuberculosis control strategies to reach the 2035 global targets in China: the role of changing demographics and reactivation disease. *BMC Med* 13: 88. doi: 10.1186/s12916-015-0341-4.
4. Wu B, Yu Y, Du C, Liu Y, Hu D (2019) Epidemiology of drug-resistant tuberculosis in Chongqing, China: a retrospective observational study from 2010 to 2017. *PLoS One* 14: e0216018. doi: 10.1371/journal.pone.0216018.
5. Pinault (2017) Estimates and 25-year trends of the global burden of disease attributable to ambient air pollution: an analysis of data from the global burden of diseases study 2015. *Lancet* 389: 1907-1918. doi: 10.1016/S0140-6736(17)30505-6.
6. Morrow PE (1988) Possible mechanisms to explain dust overloading of the lungs. *Fundam Appl Toxicol Off J Soc Toxicol* 10: 369-384. doi: 10.1093/toxsci/10.3.369.
7. Pompilio A, Di Bonaventura G (2020) Ambient air pollution and respiratory bacterial infections, a troubling association: epidemiology, underlying mechanisms, and future challenges. *Crit Rev Microbiol* 46: 600-630. doi: 10.1080/1040841X.2020.1816894.
8. Hwang S, Kang S, Lee J-Y, Lee JS, Kim HJ, Han SK, Yim J-J (2014) Impact of outdoor air pollution on the incidence of tuberculosis in the Seoul metropolitan area, South Korea. *Korean J Intern Med* 29: 183-190. doi: 10.3904/kjim.2014.29.2.183.
9. Smith GS, Van Den Eeden SK, Garcia C, Shan J, Baxter R, Herring AH, Richardson DB, Van Rie A, Emch M, Gammon MD (2016) Air pollution and pulmonary tuberculosis: a nested case-control study among members of a northern California health plan. *Environ Health Perspect* 124: 761-768. doi: 10.1289/ehp.1408166.
10. Lai T-C, Chiang C-Y, Wu C-F, Yang S-L, Liu D-P, Chan C-C, Lin H-H (2016) Ambient air pollution and risk of tuberculosis: a cohort study. *Occup Environ Med* 73: 56-61. doi: 10.1136/oemed-2015-102995.
11. You S, Tong YW, Neoh KG, Dai Y, Wang C-H (2016) On the association between outdoor PM<sub>2.5</sub> concentration and the seasonality of tuberculosis for Beijing and Hong Kong. *Environ Pollut* 218: 1170-1179. doi: 10.1016/j.envpol.2016.08.071.
12. Sohn M, Kim H, Sung H, Lee Y, Choi H, Chung H (2019) Association of social deprivation and outdoor air pollution with pulmonary tuberculosis in spatiotemporal analysis. *Int J Environ Health Res* 29: 657-667. doi: 10.1080/09603123.2019.1566522.



13. Ge E, Fan M, Qiu H, Hu H, Tian L, Wang X, Xu G, Wei X (2017) Ambient sulfur dioxide levels associated with reduced risk of initial outpatient visits for tuberculosis: a population-based time series analysis. *Environ Pollut* 228: 408-415. doi: 10.1016/j.envpol.2017.05.051.
14. Zhu S, Xia L, Wu J, Chen S, Chen F, Zeng F, Chen X, Chen C, Xia Y, Zhao X, Zhang J (2018) Ambient air pollutants are associated with newly diagnosed tuberculosis: a time-series study in Chengdu, China. *Sci Total Environ* 631-632: 47-55. doi: 10.1016/j.scitotenv.2018.03.017.
15. National Health and Family Planning Commission of the People's Republic of China (2017). National Health Commission of People's Republic of China Diagnosis for Pulmonary Tuberculosis. Available: <http://www.nhc.gov.cn/ewebeditor/uploadfile/2017/12/20171212154852389>. Accessed: 14 May 2022.
16. Li Z, Liu Q, Zhan M, Tao B, Wang J, Lu W (2021) Meteorological factors contribute to the risk of pulmonary tuberculosis: a multicenter study in eastern China. *Sci TOTAL Environ* 793: 148621. doi: 10.1016/j.scitotenv.2021.148621.
17. Li Z, Mao X, Liu Q, Song H, Ji Y, Xu D, Qiu B, Tian D, Wang J (2019) Long-term effect of exposure to ambient air pollution on the risk of active tuberculosis. *Int J Infect Dis* 87: 177-184. doi: 10.1016/j.ijid.2019.07.027.
18. Yin P, Chen R, Wang L, Meng X, Liu C, Niu Y, Lin Z, Liu Y, Liu J, Qi J, You J, Zhou M, Kan H (2017) Ambient ozone pollution and daily mortality: a nationwide study in 272 Chinese cities. *Environ Health Perspect* 125: 117006. doi: 10.1289/EHP1849.
19. Chen R, Yin P, Wang L, Liu C, Niu Y, Wang W, Jiang Y, Liu Y, Liu J, Qi J, You J, Kan H, Zhou M (2018) Association between ambient temperature and mortality risk and burden: time series study in 272 main Chinese cities. *BMJ* 363: k4306. doi: 10.1136/bmj.k4306.
20. Jassal MS, Bakman I, Jones B (2013) Correlation of ambient pollution levels and heavily-trafficked roadway proximity on the prevalence of smear-positive tuberculosis. *Public Health* 127: 268-274. doi: 10.1016/j.puhe.2012.12.030.
21. You S, Tong YW, Neoh KG, Dai Y, Wang C-H (2016) On the association between outdoor PM<sub>2.5</sub> concentration and the seasonality of tuberculosis for Beijing and Hong Kong. *Environ Pollut* 218: 1170-1179. doi: 10.1016/j.envpol.2016.08.071.
22. Peng Z, Liu C, Xu B, Kan H, Wang W (2017) Long-term exposure to ambient air pollution and mortality in a Chinese tuberculosis cohort. *Sci Total Environ* 580: 1483-1488. doi: 10.1016/j.scitotenv.2016.12.128.
23. Ghio AJ (2014) Particle exposures and infections. *Infection* 42: 459-467. doi: 10.1007/s15010-014-0592-6.
24. Zelikoff J, Schermerhorn K, Fang K, Cohen M, Schlesinger R (2002) A role for associated transition metals in the immunotoxicity of inhaled ambient particulate matter. *Environ Health Perspect* 110: 871-875. doi: 10.1289/ehp.02110s5871.
25. Rivas-Santiago CE, Sarkar S, Cantarella P, Osornio-Vargas A, Quintana-Belmares R, Meng Q, Kim TJ, Strickland PO, Chow JC, Watson JG, Torres M, Schwander S (2015) Air pollution particulate matter alters antimycobacterial respiratory epithelium innate immunity. *Infect Immun* 83: 2507-2517. doi: 10.1128/IAI.03018-14.
26. Sarkar S, Rivas-Santiago CE, Iboronke OA, Carranza C, Meng Q, Osornio-Vargas A, Zhang J, Torres M, Chow JC, Watson JG, Ohman-Strickland P, Schwander S (2019) Season and size of urban particulate matter differentially affect cytotoxicity and human immune responses to *Mycobacterium tuberculosis*. *PLoS One* 14: e0219122. doi: 10.1371/journal.pone.0219122.
27. Chen K-Y, Chuang K-J, Liu H-C, Lee K-Y, Feng P-H, Su C-L, Lin C-L, Lee C-N, Chuang H-C (2016) Particulate matter is associated with sputum culture conversion in patients with culture-positive tuberculosis. *Ther Clin Risk Manag* 12: 41-46. doi: 10.2147/TCRM.S92927.
28. Cavalcanti YVN, Brelaz MCA, Neves JK de AL, Ferraz JC, Pereira VRA (2012) Role of TNF-Alpha, IFN-Gamma, and IL-10 in the Development of Pulmonary Tuberculosis. *Pulm Med* 2012: 745483-745483. doi: 10.1155/2012/745483.
29. Clougherty JE (2010) A growing role for gender analysis in air pollution epidemiology. *Environ Health Perspect* 118: 167-176. doi: 10.1289/ehp.0900994.
30. Sopori ML, Kozak W, Savage SM, Geng Y, Kluger MJ (1998) Nicotine-induced modulation of T cell function. implications for inflammation and infection. *Adv Exp Med Biol* 437: 279-289. doi: 10.1007/978-1-4615-5347-2\_31.
31. Ben-Selma W, Harizi H, Letaief M, Boukadida J (2012) Age- and gender-specific effects on NRAMPI gene polymorphisms and risk of the development of active tuberculosis in Tunisian populations. *Int J Infect Dis* 16: E543-E550. doi: 10.1016/j.ijid.2011.11.016.
32. Kaplan GG, Tanyingoh D, Dixon E, Johnson M, Wheeler AJ, Myers RP, Bertazzon S, Saini V, Madsen K, Ghosh S, Villeneuve PJ (2013) Ambient ozone concentrations and the risk of perforated and nonperforated appendicitis: a multicity case-crossover study. *Environ Health Perspect* 121: 939-943. doi: 10.1289/ehp.1206085.
33. Chiu H-F, Weng Y-H, Chiu Y-W, Yang C-Y (2017) Short-term effects of ozone air pollution on hospital admissions for myocardial infarction: a time-stratified case-crossover study in Taipei. *J Toxicol Environ Health A* 80: 251-257. doi: 10.1080/15287394.2017.1321092.
34. Rhee J, Dominici F, Zanobetti A, Schwartz J, Wang Y, Di Q, Balmes J, Christiani DC (2019) Impact of long-term exposures to ambient PM<sub>2.5</sub> and ozone on ARDS risk for older adults in the United States. *Chest* 156: 71-79. doi: 10.1016/j.chest.2019.03.017.
35. Qiu X, Wei Y, Wang Y, Di Q, Sofer T, Abu Awad Y, Schwartz J (2020) Inverse probability weighted distributed lag effects of short-term exposure to PM<sub>2.5</sub> and ozone on CVD hospitalizations in New England medicare participants - exploring the causal effects. *Environ Res* 182: 109095. doi: 10.1016/j.envres.2019.109095.
36. Tian Y, Wu Y, Liu H, Si Y, Wu Y, Wang X, Wang M, Wu J, Chen L, Wei C, Wu T, Gao P, Hu Y (2020) The impact of ambient ozone pollution on pneumonia: a nationwide time-series analysis. *Environ Int* 136: 105498. doi: 10.1016/j.envint.2020.105498.
37. Vicedo-Cabrera AM, Sera F, Liu C, Armstrong B, Milojevic A, Guo Y, Tong S, Lavigne E, Kysely J, Urban A, Orru H, Indermitte E, Pascal M, Huber V, Schneider A, Katsouyanni K, Samoli E, Stafoggia M, Scortichini M, Hashizume M, Honda Y, Ng CFS, Hurtado-Diaz M, Cruz J, Silva S, Madureira J, Scovronick N, Garland RM, Kim H, Tobias A, Iniguez C, Forsberg B, Astrom C, Ragettli MS, Roosli M, Guo Y-LL, Chen B-Y, Zanobetti A, Schwartz J, Bell ML, Kan H, Gasparrini A (2020) Short term association between ozone and mortality: global two stage time series study in 406 locations in 20 countries. *BMJ-Br Med J* 368: m108. doi: 10.1136/bmj.m108.

38. Smith GS, Schoenbach VJ, Richardson DB, Gammon MD (2014) Particulate air pollution and susceptibility to the development of pulmonary tuberculosis disease in North Carolina: an ecological study. *Int J Environ Health Res* 24: 103-112. doi: 10.1080/09603123.2013.800959.
39. Alvaro-Meca A, Diaz A, de Miguel Diez J, Resino R, Resino S (2016) Environmental factors related to pulmonary tuberculosis in HIV-infected patients in the combined antiretroviral therapy (cART) era. *PloS One* 11: e0165944. doi: 10.1371/journal.pone.0165944.
40. Lai T-C, Chiang C-Y, Wu C-F, Yang S-L, Liu D-P, Chan C-C, Lin H-H (2016) Ambient air pollution and risk of tuberculosis: a cohort study. *Occup Environ Med* 73: 56-61. doi: 10.1136/oemed-2015-102995.
41. Yamazaki S, Shima M, Ando M, Nitta H (2009) Modifying effect of age on the association between ambient ozone and nighttime primary care visits due to asthma attack. *J Epidemiol* 19: 143-151. doi: 10.2188/jea.JE20081025.
42. Heng J, Xia H (2017) Research on environmental protection measures for ozone pollution. *Environ Dev* 83-85.

### Corresponding author

Professor Yan Zhang, PhD.

Professor of School of Public Health, Research Center for Medicine and Social Development, Innovation Center for Social Risk Governance in Health, Research Center for Public Health Security, Chongqing Medical University.

Tel: 0086-18602392586

Email: zhangyan@cqmu.edu.cn

**Conflict of interests:** No conflict of interests is declared.

**Annex – Supplementary Items****Supplementary Table 1.** Spearman rank correlation coefficients between daily concentration of air pollutants and meteorological factors in Chongqing from 2014 to 2020.

	TEM	PRE	HUM	SUN	PM <sub>2.5</sub>	PM <sub>10</sub>	SO <sub>2</sub>	CO (µg/m <sup>3</sup> )	NO <sub>2</sub>	O <sub>3</sub>
TEM	1.00									
PRE	-0.01	1.00								
RUH	-0.39	0.62	1.00							
SSD	0.56	-0.38	-0.69	1.00						
PM <sub>2.5</sub>	-0.42	-0.38	-0.06	-0.12	1.00					
PM <sub>10</sub>	-0.30	-0.47	-0.20	0.01	0.96	1.00				
SO <sub>2</sub>	-0.17	-0.45	-0.29	0.07	0.66	0.73	1.00			
CO (µg/m <sup>3</sup> )	-0.39	-0.25	0.19	-0.23	0.72	0.69	0.63	1.00		
NO <sub>2</sub>	-0.25	-0.38	-0.15	0.04	0.65	0.70	0.50	0.56	1.00	
O <sub>3</sub>	0.75	-0.20	-0.65	0.77	-0.23	-0.11	-0.04	-0.35	-0.10	1.00

TEM: temperature; PRE: precipitation; HUM: humidity; SUN: sunshine hours.